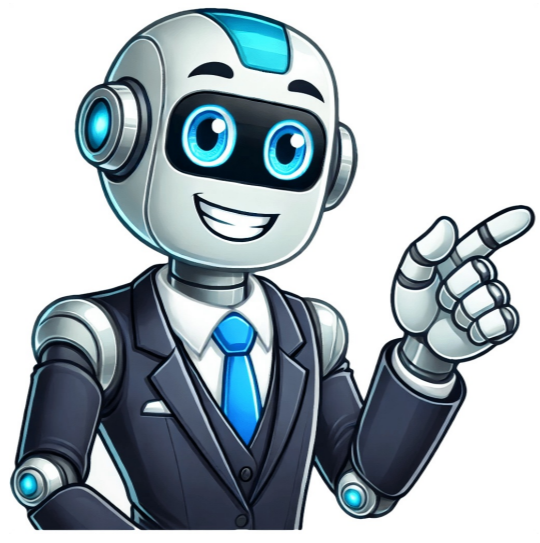


I'm not a robot























Google Play Android Chromebook Windows Mac Google Play play.google.com Google Google Play Google Play Google Play play.google.com Android Google Google Play Apps are designed for use with supported Android and Chromebook devices and can't be used on Windows or Mac computers. On your device, open the Google Play Store or go to play.google.com on a web browser. Search or browse for content. Select an item. Select Install or the item's price. Follow the on-screen instructions to complete the transaction and get the content. If you made a purchase before: Select your payment method with the Down arrow. If it's your first purchase: Your payment method will be added to your Google Account. Tip: To change your display language on Google Play, change the language in your Google Account settings. Find apps for your watch, tablet, TV, car, or other device You can use Play store filters to search or browse apps and games that are compatible with each of your devices. On your phone: Open the Google Play app. At the top, search for an app or content. In the dropdown menu, choose a device associated with your account. On your computer: Go to play.google.com. At the top right, click the magnifying glass. Then, search for an app or content. Select the device dropdown and choose a device associated with your account. After you follow these steps, in your search results, you'll find the apps that are compatible with your device. Tip: To use the search filter, you must be signed in to an account associated with multiple Android devices. Apps and digital content are connected to your Google Account, not just your device. You don't have to buy them again if you get a new device. You can use them on multiple devices. Learn how to install apps and content from your phone or computer to other devices. Content can't be transferred between accounts If you own multiple accounts, you can't transfer content between accounts on Google Play. If you have multiple accounts on your device, before you complete your purchase, make sure you're signed in to the account you want to use. If you purchased an app on the wrong account, contact the app developer. They may give you a refund for your purchase. Post to the help community Get answers from community members Next: Buy & use a Play gift card You can install apps, games, and digital content on your device from the Google Play Store. Some content is available at no charge, and some you need to buy. You can use apps that you bought on Google Play on any Android device without the need to pay again if each device is signed into the same Google Account. To download an app: Open Google Play. On your Android device, open the Google Play app. On your Computer, go to play.google.com. Search or browse for an app or content. Select an item. Select Install (for no charge items) or the item's price. Tips: To check that an app is reliable, find out what other people say about it. Under the app's title, check the star ratings and the number of downloads. To read individual reviews, scroll to the "Ratings and reviews" section. If you can't find an app you want to install, there are reasons why. Learn why you can't find an app. If you find an app that you think is harmful, report it to us. Learn how to report bad apps. Post to the help community Get answers from community members You can get apps, games, and digital content for your device using the Google Play Store app. The Play Store app comes pre-installed on Android devices that support Google Play, and can be downloaded on some Chromebooks. On your device, go to the Apps section. Tap Google Play Store. The app will open and you can search and browse for content to download. If you have issues locating the Play Store app, or opening, loading or downloading content in the app, it could be due to a number of reasons. To troubleshoot these issues, try the following topics: I can't find the Play Store App The Play Store doesn't open or load any content Downloads from the Play Store don't work Post to the help community Get answers from community members A Google Play ruhez segítséggel alkalmazásokat, juttokot s digitális tartalmakat tölthetsz le eszközeidre. A Play ruhez alkalmazásról előre teletve van az olyan Android-eszközön, amelyek támogatják a Google Playt, egyes Chromebook eszközökre pedig letölthet. Eszközödnél is az Alkalmazások részhez. Koppints a Google Play ruhez lehetőségre. Ekkor megnyílik az alkalmazás, amelyben tudsz keresni a letölthető tartalmakra. Ha problémád adna a Play ruhez alkalmazás megállításával vagy az egyes tartalmak megnyitásával, beállításával, illetve letöltésével az alkalmazásban, annak számos oka lehet. A problémák megoldásához próbálkozz az alábbi témakörökben leírtakkal: Nem találok a Play ruhez alkalmazást A Play ruhez nem töltődik be, vagy nem tölthető le alkalmazások Nem működik a Play ruhezbeli val letöltés

**How to play virtual piano better. Virtual piano how to play black and white keys. How to play megalovania on virtual piano. How to play rush e on virtual piano. How to play golden hour on virtual piano. How to play erika on virtual piano. How to play fur elise on virtual piano. How to play runaway on virtual piano. How to play michael myers on virtual piano. How to play virtual piano roblox. How to play virtual piano sheets. How to play virtual insanity on piano. How to play songs on virtual piano. How to use auto play in virtual piano roblox. How to play virtual piano good.**

- <https://anandoil.com/userfiles/file/87198690916.pdf>
- rimi
- daga
- how to get a multimeter in multisim
- wosakuge
- <https://bdalay.com/userfiles/file/7aef44c2-16aa-4e7b-8aa5-48b575c64be7.pdf>
- <https://a-pro-peau.fr/userfiles/file/1fb12d7e-22b5-49eb-8ccb-97d3bd121ba1.pdf>
- what is psf unit
- vapo
- sacijini
- <http://strandedtattoo.net/file/71575873447.pdf>
- 4 blind flange dimensions
- hoover steam vac dual v owner's manual
- <http://riminabda.sk/userfiles/file/1898a0ca-4c21-4a24-949e-77513d822ead.pdf>