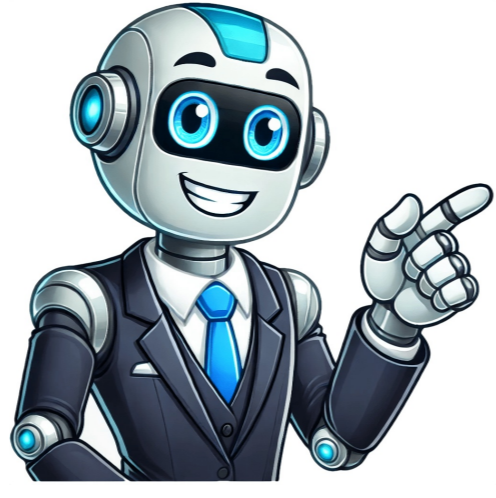


Continue



B ukulele chord

Welcome to our detailed guide on B (Si) ukulele chords. This page provides you with a comprehensive visual chart featuring various chord variations in the key of B. Whether you are looking to master basic triads or explore more complex extensions, this chart serves as an invaluable resource for expanding your musical repertoire on the ukulele. All ukulele chord diagrams from the note B The B chord can be played in several ways, and here we present you with 17 different chord voicings to enhance your playing. Each chord diagram is designed to show you exactly where to place your fingers on the fretboard, making it easy to learn and master each chord. Featured B Chords Below you will find a range of B chord variations to explore: Major and Minor: B ukulele chord diagram Bm ukulele chord diagram Sevenths: B7 ukulele chord diagram Bm7 ukulele chord diagram Extensions and Alterations: B6 ukulele chord diagram Bm6 ukulele chord diagram B9 ukulele chord diagram Bm9 ukulele chord diagram B7/6 ukulele chord diagram Suspended and Diminished: B- ukulele chord diagram Bdim ukulele chord diagram Bdim7 ukulele chord diagram Bsus2 ukulele chord diagram Bsus4 ukulele chord diagram B7sus4 ukulele chord diagram B7sus4 ukulele chord diagram How to Use This Chart Visual Learning: Each diagram includes a visual representation of where your fingers should be placed on the fretboard. Practice: Try playing each chord to understand how it sounds and how it might fit into a song or chord progression. Experiment: Use these chords to experiment with new songs or to add flavor to old ones. Whether you are just starting out with the ukulele or looking to add more chords to your musical toolkit, this page is designed to provide you with all the variations of B chords that you need. Happy strumming! Greetings, ukulele enthusiasts and music lovers! Get ready to explore the intricate universe of the B ukulele chord, a fascinating yet challenging territory for many players. You're not alone if you've ever struggled with this particular chord. Today, fear not as we embark on a musical journey designed to unravel the mysteries of the B ukulele chord.In the upcoming pages, we'll navigate through the diverse styles and voicings of the B chord, breaking down its complexities into manageable steps. From different finger placements to unique strumming techniques, we'll delve into the nuances that define this chord's character. Whether you're a beginner looking to conquer your first challenging chord or an experienced player aiming to enhance your skills, this guide is tailored just for you.So, grab your ukulele, tune your strings, and join me as we unlock the secrets of the B ukulele chord together. With patience, practice, and a sprinkle of enthusiasm, you'll soon master this chord, opening the door to a world of musical possibilities. Happy strumming!The B ukulele chord is a major chord that consists of the notes B, D#, and F#. To play the B chord on the ukulele, you typically use your index finger to bar the entire second fret, pressing down on all four strings. This forms a straight line across the fretboard, barring the second fret and creating the B major chord.The B chord is often considered one of the more challenging chords for beginners due to the need for barring the fret. Getting all four strings to ring out clearly can be tricky, and it may take some practice to develop the finger strength and positioning accuracy required to play it smoothly. However, as you progress in your ukulele playing, the B chord becomes more manageable, and it opens up new harmonic possibilities in your music, allowing you to play a wide range of songs and progressions.Before we delve into the different variations of the B chord, let's understand its basic structure. The B major chord consists of a root note (B), a major third (D#), and a perfect fifth (F#). To form this chord, you'll need to use a combination of fretted and open strings, which can be challenging for beginners.To make the B ukulele chord more accessible, there are various fingerings you can try. One common approach is the barre chord technique, where your index finger presses down multiple strings across a single fret. Another option is to use open chord shapes, leaving some strings open to produce the desired sound.Beyond the standard B major chord, several exciting variations and styles exist to explore. Experiment with fingerpicking patterns to add a unique flair to your chord progressions. Alternatively, spice things up with various strumming patterns that evoke different moods and emotions in your music.The barre chord technique is versatile in playing the B ukulele chord. Place your index finger flat across the second fret to create a barre chord, barring all four strings. Subsequently, position your middle finger, ring finger, and pinky finger on the fourth frets of the G, C, and E strings, respectively.If the barre chord feels too challenging, try open chord shapes. One option is to place your index finger on the first fret of the E string, your middle finger on the second fret of the C string, and your ring finger on the third fret of the G string. Leave the A string open to create the B chord in an open position.Fingerpicking can add an enchanting touch to your ukulele playing. To create a fingerpicking pattern for a B chord, initiate by plucking the A string using your thumb, then proceed to the G string with your index finger, the C string with your middle finger, and finally, the E string with your ring finger.Strumming patterns can significantly influence the feel of your music. Experiment with different strumming techniques like the basic down-up, island, or reggae strum to find the one that complements your playing style.Mastering the B chord requires patience and practice. Pay attention to your finger placement and apply the correct pressure to ensure a clear and crisp sound. Avoid common mistakes like muting neighboring strings or pressing too hard, leading to buzzing sounds.Place your fingers close to the frets and press down firmly without straining to produce a clean sound. Remember, practice makes perfect, so keep at it, and you'll conquer the B chord in no time.It's easy to get frustrated when learning the B chord, but don't give up! Common mistakes include not applying enough pressure with your fingers, allowing strings to buzz, or accidentally muting strings. Be mindful of your hand positioning and make adjustments as needed.Now that you've mastered the B chord let's explore some popular songs that feature this delightful sound. Songs like "I'm Yours" by Jason Mraz and "Riptide" by Vance Joy incorporate the B chord in their catchy melodies. Try transposing other songs into the key of B to expand your repertoire."I'm Yours" – Jason Mraz"Riptide" – Vance Joy"Better Together" – Jack Johnson"Banana Pancakes" – Jack Johnson"Sweet Home Alabama" – Lynyrd SkynyrdTransposing songs to the key of B can give them a fresh and unique sound. Experiment with your favorite tunes and see how they sound with the B ukulele chord.This, you might discover new and exciting ways to play familiar melodies.Congratulations on your musical endeavor to conquer the B ukulele chord! As you delve into the intricacies of this chord, remember that mastering it is a testament to your dedication and persistence. Like any skill, it takes time to refine your technique, so don't be disheartened by the initial challenges. Embrace the various styles and voicings of the B chord; experiment with finger placements and strumming patterns to discover your unique sound.Furthermore, understanding the B chord opens doors to a multitude of musical opportunities. Explore its role in different genres, from folk to pop and beyond, and incorporate it into your compositions to add depth and complexity. With each practice session, you're not just honing your skills; you're enriching your musicality.So, keep strumming, experimenting, and, most importantly, enjoying the process. In no time, the B ukulele chord will become a familiar friend, enhancing your playing and enabling you to create beautiful melodies that resonate with your audience. Happy playing!Yes, the B chord can be challenging for beginners due to its complex finger positioning, but it becomes more manageable with practice. Some popular songs include "I'm Yours" by Jason Mraz, "Riptide" by Vance Joy, and "Better Together" by Jack Johnson.Yes, you can use open chord shapes for the B chord to make it easier to play.Practice fingerpicking patterns slowly and gradually increase your speed and accuracy.Place your fingers close to the frets and apply enough pressure to avoid buzzing strings.Yes, transposing songs to the key of B can add a fresh and unique sound to familiar melodies.The time to master the B chord varies for each individual, but consistent practice and dedication are crucial to success.Affiliate Disclaimer:UkuleleInsider.com may include affiliate links, which allow us to earn a small commission when you make a purchase through them. This helps support our site at no extra cost to you. Thank you for your support! B major ukulele chord is also written as Bmaj or B or Bm.Ukulele chord chart for B major chord with suggested finger positions on the ukulele fretboard is shown below.3211631219234112436312481442111114View B major chord for guitar. To view all other guitar chords with suggested finger positions, check out major chord for ukulele with other root notesC - D - E - F - G - A - B - C# - D# - F# - G# - A# - D# - Eb - G# - A# - B. The B ukulele chord can be a little tricky to play for many beginners. In this article, we demystify the chord and provide some alternative finger positions to help you out.Written by Jay Searle / Published October 28, 2022Last updated: April 4, 2024Chord diagrams for the B ukulele chord with suggested fingerings and variations are shown below:Position 1Alternative 1Alternative 2The B ukulele chord is a little more difficult than the other major chords we have encountered so far. This major chord will have you playing it in a barred position from the get-go. Sounds a little intimidating, but I'm confident you'll be able to master it.So, let's have a bit of a closer look at what makes up the B Major chord, where it comes from, and how to play this slightly more complicated chord.The B Major chord is made up of three notes, namely B, D# and F#. These notes are taken from the B Major scale. The key of B Major has 5 sharps, which is quite a few to keep track of. The major triad, or B Major chord, consists of the major scale's first, third and fifth notes.The ukulele gives us a wealth of possibilities for playing this chord. Let's have a look at a few of them.There are several ways to play the B Major chord. The first variation we are going to look at requires that you barre the E and A strings at the 2nd fret. This barre is what sometimes makes it feel difficult for beginners. Don't worry, you are certainly not the only one who may find it difficult at first.So, let's have a look at the chord. Ukuleles are typically tuned G (4th string), C (3rd string), E (2nd string) and A on the 1st string. It's important to note, though, that unlike the guitar, the 4th string is not your lowest tone, that is the C or 3rd string on a ukulele. This is because most ukuleles use re-entrant tuning where the 4th string is tuned up an octave.Next, we'll look at playing the B Major chord in different positions of the ukulele. As we move up the fretboard, the order in which we play the notes will change. This gives the chord a slightly different sound depending on which note is in the bass. It's important to note that we are still playing the same notes - that is B, D#, and F# - just in different orders on the strings.We'll show you a few different variations for playing B Major, but this list is not at all exhaustive. Once you know your way around the fretboard, it's possible to come up with your own shapes and fingerings for any chord!You can also play the B Major with different fingerings. While learning B Major is tough, this fingering is less challenging than the previous one, but still requires a bit of dexterity.There is no need to barre the chord, but you do need to shift your fretting hand position to the fourth fret. The stretch across two frets can make a beginner uncomfortable but it's quite doable. Keep experimenting with what works for you and feels the most natural in your playing.The third way to play the B Major chord will really work for those of us who are having a little trouble getting all our unwilling fingers to cooperate. In this version, we move our fretting hand position again, this time to the 6th fret. While you are going to be playing a barre again, there are no big stretches in this chord, and you are only using two fingers. This makes it one of the easiest ways to play the B Major.Learning the B major chord has intimidated many a beginner ukulele player. It is one of the harder chords to master for beginner players, but a little time and practice will sort that out.This video from Pierre Hache gives a practical demonstration of how to play this tricky chord.When have I ever forgotten baritone players? The baritone is tuned d-G-B-E. That means that in order to play the B Major chord you will have to change the placement of your fingers.Have a look at the diagram below to see how to play the B Major on the baritone ukulele.Now that you have put in the time and effort to learn the B Major chord, let's have a look at some practical applications.The first suggestion for your repertoire is this video tutorial by Cynthia Lyn Music. She teaches you how to play Radiohead's well-known number, Creep, which uses the B Major chord to great effect.And if you are feeling adventurous and really want to build those barre chord chops, then check out this video by The Ukulele Teacher. The video is super informative and will help you with playing barre chords. You'll be a pro in no time at all.Certain chords on the ukulele are tricky to learn, especially if some notes are not available on open strings. The B major chord is definitely one of them. But, by following our guide, your fingers will eventually get used to playing the B ukulele chord in no time at all.Website Founder & WriterJay is a self-professed music nerd and ukulele lover. When not working on the website you'll find him strumming along to his favorite tunes, spending time with his family, or learning to play the piano. Here are the Ukulele Chords: B / B7 / Bm / Bm7 / Bmaj7 / B9 / Bb / Bbm. Including image chords and video tutorials for beginners. #1. B ukulele chord is also denoted as B maj How to play the B ukulele chord? When playing the ukulele chord B, pressing your index finger on the 2nd fret of the E-string and bottom-A string, the ring finger on the top G-string on the 4th fret, and your middle finger on the C-string on the 3rd fret. See details in the videos below. #2. B7 ukulele chord How to play the B7 ukulele chord? When playing the B7 chord, first pressing your index finger on the 2nd fret on the 2nd fret on the top G-string, E-string, and bottom-A string, and then your middle finger on the C-string on the 3rd fret. See details on how to play the B7 ukulele chord in the videos below. #3. Bm ukulele chord is also denoted as Bmin How to play the Bm ukulele chord? To play the Bm ukulele chord, pressing your index finger on the 2nd fret on the C-string, E-string, and bottom-A string, and your ring finger on the top G-string on the 4th fret. The detail in the video is below. #4. Bm7 ukulele chord is also denoted as Bmin7 How to play Bm7 ukulele chord? The Bm7 ukulele chord is a simple barre chord. to play it, just press your index finger across the 2nd frets, and press down on all 4 strings. See details in the video below. #5. Bb chord or B flat ukulele chord is also denoted as A# chord. How to play the Bb (A#) ukulele chord? When playing the Bb ukulele chord, place your ring finger on the top G-string of the 3rd fret, your middle finger on the C-string on the 2nd fret, and the index finger to barre down on the 1st fret on both bottom two strings. See full tips and tricks on how to play the Bb chord in the videos below. #6. Bbm ukulele chord is also denoted as A#m chord How to play the Bbm (A#m) ukulele chord? In order to play the Bbm chord, pressing your index finger on the 1st fret of the C-string, E-string, and bottom-A string, then use your ring finger to press on the 3rd fret of the top G-string. #7. Bmaj7 ukulele chord How to play the Bmaj7 ukulele chord? When playing the Bmaj7 chord, pressing your index finger on the 2nd fret of the E-string and bottom-A string, your middle finger on the top G-string on the 3rd fret, and the ring finger on the C-string on the 3rd fret. #8. B9 ukulele chord How to play the B9 ukulele chord? To play the B9 ukulele chord, pressing your index finger on the 2nd fret of 4 strings. Your middle finger on the top C-string on the 4th fret, your ring finger on the 4th fret of bottom A string. See details on how to play the B9 ukulele chord in the videos below. Starting ukulele students usually have this frequent experience: You might be rolling right alongside, strumming, and singing, you got your C chord down, Am, F, even G. Then you must play a B and also you decide to take a break. Well, that is not the solution if you want to learn this new chord.The B is probably the most dreaded starting chord for the aspiring ukulele player. Let's break it down and see why it's so troublesome (because it's, you're right), and the right solution to play this ukulele chord so that it's going to become as simple as the A and A strings. The fingering of this chord is fairly the same as the Bb or B flat, but all slid down for one fret. The Bb has the barre index finger on the first fret and the B Major has it on the second fret. Now we have that out of our way and we wish to share how we play this when it's half barre chord. That signifies that one finger covers 2 strings. If it had been a full barre, you'd cover all 4 strings with 1 finger.The B uses what is named a "barre" (pronounced "bar"). Your first finger has to press down on two strings directly - the first and second strings each on the 2nd fret. That is the barre. Then, your second finger frets the third string on the third fret, and your third finger the fourth string on the fourth fret.When playing B on the ukulele you may both fully or partially barre your index finger. If using the full finger leave it barely over the top of the 2nd fret and press down on the remainder of the strings, ensuring none are muted. A partial barre is utilizing the top of the index finger to play simply the E and A strings. On the C string, the third finger performs the third fret, and the ring finger performs the fourth fret. 24 G string. The final two fingers need to remain as straight up as possible in order that they do not interfere with different strings.To repeat the steps:Use your index finger to press E and A Strings for half barre (or you can do full barre) on the 2nd fret.Use your Middle finger to press the C string on the 3rd fret.Use one of your free fingers to press the C string on the 4th fret.Well, unfortunately, even the inversions of this chord are difficult. We will go with several other ways how you can play the B Major chord and we hope that you will find some of these easy to use. Not that the root position is that hard, but it is way more complex compared to the other major chords, except E major - which is a real pain.Here is one other way how you can perform this chord down:Use your Index finger to press the G string on the 4th fret.Use your Middle finger to press the C string on the 6th fret.Use your Ring finger to press the A string on the 6th fret as well.Use your little finger to press the E string on the 7th fret.We said it is not going to be an easy task, but with some practice, you will be able to nail it. If you find it easier, you can go full barre with the index finger and focus more on the other fingers and proper arch not to mute any other strings.In our opinion, this might be one of the easiest ways to perform this chord. Also, you will need to practice it well, but this one should take a bit less time to master, compared to the other two versions of this chord. Again here, you will be able to use your index finger to press two strings at once, meaning that you will use only three fingers to perform this chord.Here is the right order of positioning and below, as always, you will be able to find a diagram of how to press it right:Use your Index finger to press the C and A strings on the 6th fret.Use your Middle finger to press the E string on the 7th fret.Use the Ring finger or the little finger to press the G string on the 8th fret.Much easier, right? Well anyway, you will need to practice it and use it when you will find it easy to transition from or to some other chord. The B major chord only makes all main chords is a three-note chord (a triad). As a result of the fact that it's a major chord, it has a cheerful, optimistic sound, not a down sound as is typical of minor chords.When performed on piano this chord is made up of 1 white key and two black. The B major scale itself makes use of all 5 black keys, however, the B major chord only makes use of two.The B major chord is shaped by combining the notes B, D#, and F#. B is the foundation note, D# is a major third and F# is the perfect fifth of the key scale. From B, you progress two tones higher to reach D#, and from D# you progress one and a half tones itself to reach F#. "What Makes You Beautiful" is a tune by the English-Irish boy band One Direction. It was their debut single and lead single from their debut studio album, Up All Night (2011). Written by Savan Kotecha and producer Rami Yacoub, the tune was published by Syco Records on 11 September 2011. The uptempo power-pop tune includes an outstanding guitar-based refrain and riff. Center eight consists of a "na na na" hook.This song can also be easily performed with a ukulele and it also has our new favorite chord - the B Major. With this new song that you will be able to play with the B chord, you will be in trend with the youngsters and the new modern music that is coming out.The guys from One Direction made a huge boom on the music scene, so this tune will certainly be recognized when you play it. So here we are at the end of another hard chord. We provided you with some general and basic information about this chord and step by step process on how you can perform it in the root position and in a couple of other variations when you play ukulele chords.Hard work is always appreciated and this chord requires it. If you are a hard-working person and ukulele player, this will be just a fun challenge for you. So head on and learn this one and do not forget to practice!Below you will be able to find a video on how to play B Major Chord on Ukulele! To play the B Major chord, perform a barre by pressing your index finger on the E-string and bottom-A string on the 2nd fret, ring finger on the 4th fret of the top g-string, and middle finger on the 3rd fret of the C-string. The B major chord contains the notes B-D#-F#. To build a B major chord, take the major triad formula (1-3-5) and apply it to the B major scale (B, C#, D#, E, F#, G#, A#). Identify the first, third, and fifth scale degrees in the B major scale which are B-D#-F#. Watch the following video to learn how to play a B major chord on ukulele. Free Baritone uke chord charts to download in PDF, for beginners and advanced players. 8 Must-know ukulele chords for beginners This PDF contains the 8 basic chords you MUST know to get you started. A must-have for any beginner. 24 Popular and useful chords Did you know that most popular songs consist of only major and minor chords? With these 24 chords, you can play up to 80% of all the songs ever composed. 96 Most common ukulele chords All the 96 most-common Ukulele chords. Not more, not less. The resource every player should get and print.Complete ukulele chords chart Extended collection containing 240 diagrams. That's an extended version of the previous chart containing 240 chord diagrams. For advanced players. Spread the world Beginning ukulele learners often feel it: You may be spinning right alongside, playing, and singing, and you are playing your C chord, Am, F, or even G. After that, you need to strum B, and you will make up your mind to take a break. Okay, but it's not a solution if you wish to master this new B ukulele chord. The B might likely be the most intimidating beginning chord for the aspiring ukulele player. We break it down. Then, we observe why it is too difficult. Let's find the right solution to playing this chord so it may become as easy as any other chord. The fingering of this chord seems to be pretty much the same as Bb or B flat, but all drop down to one fret. Bb's barre index finger remains on the 1st fret, and B major remains on the 2nd fret. Since it does not have to us now, we want to show how to play it whenever it becomes a half-barre chord. It implies that one finger enwraps two strings. If it's a full barre, you'll apply one finger to all four Strings. What's called a "barre" (pronounced "bar") is used by the B. You should press your first finger outrightly on two strings - the 1st and 2nd strings each at the second fret. That's the barre. After that, place your 2nd finger on the 3rd string on the 3rd fret and your 3rd finger on the 4th string on the 4th fret. You can entirely or partially barre your index finger while playing B on the ukulele. Applying the whole finger, release it at the top of the second fret and squeeze on the rest of the strings, making sure that there's no one muted. A partial barre is simply playing the E and A strings using the top of the index finger. The 3rd finger plays the 3rd fret on the C string. Again, on the G string, the ring finger plays the 4th fret. The last two fingers should be as outright as possible so they can't interfere with the different strings. To reiterate the moves: You press the E and A strings a half bar (or you might accomplish a full barre) on the 2nd fret using your index finger. To press the C string at the third fret, employ your mid-finger. Apply one of your unused fingers to press the G string at the 4th fret. First Inversion: B Major Chord Okay, unluckily, even the reverse of the B seems troublesome. We'll move on to a few more ways to play B ukulele chords. Hopefully, you get some of them that are simple to use. The root position doesn't seem that difficult, but it's more complicated than the other major chords without E major, which appears to be an actual pain. Below is another way that you can accomplish this chord: Press the G string at the fourth fret using your index finger. Apply your mid-finger to pressing the C string at the sixth fret. Also, utilize your ring finger for pressing the A string at the sixth fret. Employ your little finger to press the E string at the seventh fret. As we mentioned earlier, it is not about to be a straightforward task, but you'll be capable of taking it under control with some practice. If you feel it to be simple, you might advance with the index finger and concentrate more on other fingers and proper arching, except for muting any other strings. Second Inversion: The B Ukulele Chord The B might become one of the simple approaches to performing, in our opinion. Besides, you practice it correctly, but it should require a little less time to learn than the other two versions of this chord. Again, you'll become capable of employing your index finger to press 2-strings together here, which means you'll simply be utilizing three fingers to play this chord. You'll find the exact sequence of finger positions below. Also, you will get a visual diagram of how to accomplish it right, just as always. On the sixth fret, employ your Index finger to press the C and A strings. Apply your mid-finger to pressing the E string on the seventh fret. On the eighth fret, utilize the Ring finger or the little finger for pressing the G string. It's pretty simple, isn't it? However, you have to exercise it and employ it when you feel straightforward to shift from it or to any other chord. Popular Songs that use the B The English-Irish boy band One Direction has performed "What Makes You Beautiful." It appeared in their debut album, Up All Night (2011), as the first solo and lead single. Composed by Savan Kotecha and producer Rami Yaku, Psycho Records revealed this song on 11 September 2011. This uptempo power-pop melody incorporates an extraordinary guitar-based break and riff. Center eight is made up of a "Na Na Na" hook. This song might also be effortlessly played with a ukulele and features our new favorite chord - the B. The boys of One Direction have created an extensive boom in the music scene. Therefore, this track would be acknowledged while playing it. Click Here for What Makes You Beautiful Uke Chord. Conclusion Indeed, we remain at the final touch of another tough chord. We have informed you of some basic information and a step-by-step guide with the original position and a few other variations so you can attain your aim. Hard work is essential to be successful. So, keep on practicing consistently to be triumphant. Read also: Am Uke Chord A Ukulele Chord C Chord for Uke Note: Photo taken on a Soprano ukulele.Page 2 Page 3 Page 4 Page 5 Page 6 Page 7 Attention: This photo shows you the correct chord position, but at a different location on the fretboard!Page 8 Attention: This photo shows you the correct chord position, but at a different location on the fretboard!Page 9 Page 10 Page 11 Attention: This photo shows you the correct chord position, but at a different location on the fretboard!Page 12 Attention: This photo shows you the correct chord position, but at a different location on the fretboard!Page 13 Page 14 Page 15 Page 16 Page 17 Page 18 Page 19 Page 20 Page 21 Page 22 Page 23 Page 24 Page 25 Page 26 Played '4322' on the soprano - Standard Tuning (GCEA). Alternative name: Bmajor. View this chord in: G-Tuning (DGBE)D-Tuning (ADF#B)Slack-Key Tuning (GCEG)Don't know how to read a chord? Read this first. How to play the B on your ukuleleWhen playing B on the ukulele you can either completely or partially barre your index finger. If using the full finger leave it slightly over the top of the second fret and press down on the rest of the strings, making sure none are muted. A partial barre is using the top of the index finger to play just the E and A strings. On the C string the middle finger plays the third fret, and the ring finger plays the fourth fret of the G string. The last two fingers need to stay as straight up as possible so that they do not interfere with other strings. We have 2 other positions for this uke chord. Similar Charts:Same Fingering (9): Bb, C, Db, D, Eb, E, F, Gb, F11. Scales related to this chord:Selection of famous scales you can play on a B chord to improvise great solos on your Uke.Scales that fit: B Major, E Major, Gb Major, E Melodic minor, Gb Melodic minor, Eb Harmonic minor, E Harmonic minor, Db Natural minor, Eb Natural minor, Ab Natural minor, Ab Blues, B Major pentatonic, A Overtone, B Overtone, Eb Altered, F Altered, D Altered bb7, Eb Altered bb7, Eb Super locrian, F Super locrian, D Ultralocrian, Eb Ultralocrian, E Hawaiian, Gb Hawaiian. Create your own B ukulele chord pattern using the notes of the B arpeggio / intervals on the fretboard . Got questions? Want to share a tip or simply talk uke? Join the conversation! Spread the world Note: Photo taken on a Soprano ukulele.Page 2 Page 3 Page 4 Attention: This photo shows you the correct chord position, but at a different location on the fretboard!Page 5 Attention: This photo shows you the correct chord position, but at a different location on the fretboard!Page 6 Attention: This photo shows you the correct chord position, but at a different location on the fretboard!Page 7 Page 8 Page 9 Attention: This photo shows you the correct chord position, but at a different location on the fretboard!Page 10 Attention: This photo shows you the correct chord position, but at a different location on the fretboard!Page 11 Attention: This photo shows you the correct chord position, but at a different location on the fretboard!Page 12 Page 13 Page 14 Attention: This photo shows you the correct chord position, but at a different location on the fretboard!Page 15 Page 16 Page 17 Page 18 Page 19 Page 20 Page 21 Page 22 Attention: This photo shows you the correct chord position, but at a different location on the fretboard!Page 23 Page 24 Page 25 Page 26 Spread the world