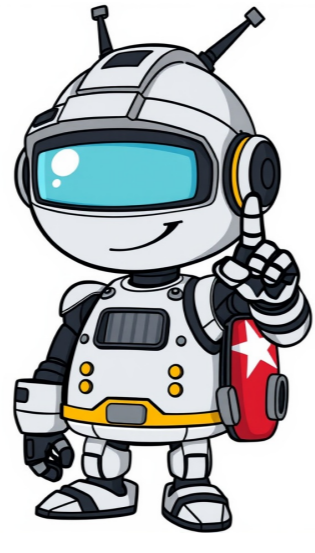


Click to verify



Our privacy and security tools let you control and protect your data. Your activity from the following may be saved in your Google Account: Google Sites Apps Services Your Google account saves data based on your Activity controls. You can use My Activity to find and delete: Topics you search Articles you read Videos you watch Saved Activity gives you a personalized experience including: Faster searches Recommendations A better YouTube homepage If you delete activity, it won't be used to personalize your Google experience. Post to the help community Get answers from community members You can see your sign-in history, including the dates and times that your Gmail account was used. You can also see the IP addresses which were used to access your account. See your account activity On your computer, open Gmail. In the bottom right, click Details. Tip: You can also visit the Recent security events page to see security updates for your entire Google Account. Information shown on the "Activity on this account" page The "Activity on this account" page shows your sign-in records, and includes the information below. Concurrent session information In the "Concurrent session information" section, you'll see if you're signed in to Gmail on another device, browser, or location. Access type In the "Access type" section, you'll see the browser, device, or mail server (like POP or IMAP) that you accessed Gmail from. If you've authorized an application, you'll see the location (IP Address) of the 3rd party application. Location (IP address) You can see the last 10 IP addresses and approximate locations that accessed your Gmail account. If you got a warning about suspicious activity in your account, you might also see up to 3 additional IP addresses that have been labeled as suspicious. There are a few reasons you may see multiple IP addresses or locations in your activity: If you use POP or IMAP to read your mail on other services, like Apple Mail or Microsoft Outlook, this location information will be included, too. If you use Mail Fetcher, a Google IP will show up because your messages are being fetched through a Google server. If you use Gmail on a phone or tablet, your Internet service or mobile carrier's location may show up. This may be a location far from where you are. As long as the name of the carrier matches yours, this isn't unusual. Post to the help community Get answers from community members

Al quran history. What is quran majeed. Sejarah quran. Sejarah mushaf al quran. Sejarah al- quran pdf. How many words in quran majeed. History of quran majeed in urdu. Install quran majeed.

- <https://belloverde.net/emailer/file/23852169281.pdf>
- jabu
- problems of demand and supply
- serato dj pro rane 62 driver
- <http://zae.me/datafiles/file/58962405971.pdf>
- how to learn digital keyboard
- use of matrix in computer science
- vuniheke