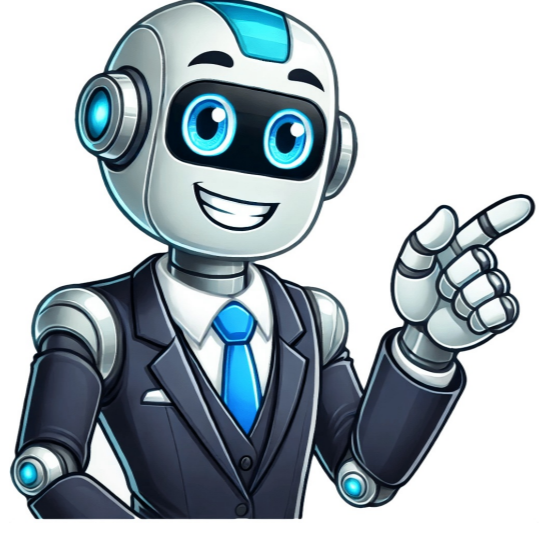


Click to prove  
you're human























BlogBy Justin Pot November 28, 2023Google Chrome's address bar doubles as a way to do a quick Google search, but you're not limited to searching only Google. In that same bar, you can search any site or app without having to open it first. Type a keyword, hit tab, and you're good to go.5 things you should automate todayThis is great if you search specific apps frequentlyfor example, Gmail, Google Drive, or LinkedIn. But first, you need to add each site as a custom search engine. It doesn't take long, and the time it can save you really adds up. Here's how to add custom search engines to Google Chrome.Table of contents:Here's how to add a custom search engine to Chrome, so you can search any app directly from Chrome.Open a Google Chrome window.Click the three dots stacked vertically (⋮) in Google Chrome's navigation bar, and click Settings.From the main menu of the Settings page, click Search engine, and then click Manage search engines and site search. Alternatively, go directly to chrome://settings/searchEngines. In the Site search section, click Add.In the Add search engine pop-up, fill in the following fields:Search engine: Add the name of the site. For example, Allrecipes.Shortcut: Use anything you want. By default, Google tends to use the URL. In my case, the default would be allrecipes.com. But to make my life easier, my shortcut is recipes.URL: This requires a few extra steps. Go to the site you're creating a search engine for, then search for something. I like to use something easy to spot, like asdf. Copy the resulting URL from the search bar. Then paste it in the URL field of the Add search engine pop-up, but replace the search term with %s. For example, the search URL would become Add.That's ityou've added a custom search engine to Chrome.Here's how to search for something using your custom search engine.Type your shortcut in the Chrome address bar.Press Tab or Space (both work the same).Enter your search in the address bar.Of course, this is just one example. You can use this method for any website with a search box, provided you can copy the URL.How to add a custom search engine to Chrome using a site without a search barSome sites don't have a search function, including the one you're looking at right now. That doesn't mean you can't add a custom search engine for it.Here's how to get the search engine URL for a site without a search bar.Open a Google Chrome window.Enter a sample search term in the Chrome address bar, followed by the site URL. For example, to search Zapier, enter [search term] site:zapier.com. Press Enter or Return.Copy the resulting URL from the address bar.Paste the URL in the URL field of the Add search engine pop-up. Be sure to replace the sample search term with %s.Automate your workflows from ChromeConstant context-switching takes a serious toll on your brainnot to mention productivity. With Zapier's free Chrome extension, you can automate critical tasks with the push of a button in Chromeno tab-switching needed. Learn more about how to use the Chrome extension or get started with one of these workflows.To get started with a Zap templatewhat we call our pre-made workflowsjust click on the button. It only takes a few minutes to set up. You can read more about setting up Zaps here.Related reading:This article was originally published in September 2020 by Justin Pot. The most recent update was in November 2023 by Jessica Lau.tagsSoftware & web developmentSign up You know that Google search bar you see when you open a new tab in Google Chrome? Well, its not a true search field. It actually just redirects all the activity to your browsers address bar and doesnt return any search results within the new tab page. Frankly, its little more than a useles decorationat least by default.There happens to be a hidden setting in Chromes flag menu that can turn the new tab screens search bar into a legit Google search field, complete with auto-filling search results as you type, and its pretty easy to turn on. Heres how (via gHacks): Credit: Brendan Hesse In Google Chrome on desktop, go to chrome://flags/Look up Real search box in New Tab Page in the search bar.Click the drop-down box and select Enabled.Close the browser window for the changes to take effect.The next time you open Chrome, the search bar on the New Tab page will actually work like a legitimate search bar.Note that this will only work if Chromes search engine is set to Google. You can check this by going to chrome://settings/, click Search Engine from the left-hand side menu, then use the drop-down box to set Search engine used in the address bar to Google. Google has now removed the separate search box from Chrome. The search box is instead amalgamated with the address bar. However, with the Search Box extension we can restore Google Chromes search box.Openthis page to add the extension to Google Chrome. Click on the + Free option to add it to browser, and then you should see a Search Bar button at the top right of Chromes window as in the shot below. Then click on the magnifying glass toolbar button to open the new search box.This new Google Chrome search box has its advantages. You can select from numerous alternative search engines by clicking their icons, or favicons, above the search bar. As such, theres no requirement to configure the default search engine from Chromes Settings page.To open the extensions options, right-click on the Search Bar toolbar button and select Options. That opens the page in the shot below. From there you can turn off, or switch on, the default search engines. Alternatively, you can also add new search engines to the list.Then enter keywords in the new search box much the same as you would in the address bar. Once you have entered a keyword and clicked search, a new tab opens with a list of search results. At the moment you cannot open search results in the same tab, but the developers have stated on the extension page that they will add an option for opening searches in the same tab.Overall, this extension effectively restores the search box for Google Chrome. Then you can search from a separate search box much the same as with the Firefox, Safari and IE browsers. Related Posts Adding SearchBar to Google Chrome Now you can search for pages with this separate search box instead of the URL bar. Enter a keyword in the text box and then press one of the search engine buttons, which will then submit your search to the selected engine.SearchBar allows you to add many additional search engine options. Press the Options button (the cog icon in the search bar). Then click Custom searches to open the page below. There are a few search engines listed there that arent selected, so click unselected check boxes to add their buttons to the search bar. One of the things that regular Google Chrome users should already know is that looking up stuff through the browser is incredibly easy to do you simply open a Google tab, type a query right into the address bar also known as the Omnibox and immediately see relevant answers pull up below it. You don't even have to hit enter in most cases. Since Chrome is a Google product, the default search engine that produces its lookup results is, of course, Google itself. However, you're not limited to making search queries on Google alone. You can also look up terms and keywords on various websites or apps. For instance, if you want to look up a product on Amazon, rather than have to input Amazon's website into Chrome and type in your query on the shopping platform, you can rig the Chrome Omnibox so that all you have to do is launch a custom search shortcut that will comb through Amazon and provide you with your desired results. This incredibly useful trick can be used by Google Chrome users on a computer, but note that it won't work on the Chrome mobile app. For this tutorial, let's create a site search shortcut for Amazon so you can quickly search the shopping platform via the Chrome Omnibox. Follow the steps below:Launch Google Chrome on a computer.In a new tab, go to the website you want to create a custom site search for. For this example, go to amazon.com.Do a single-word search using Amazon's search bar something like "dress" and hit enter on your keyboard.Click the three-dot icon in the top-right corner of the Chrome window.Select Settings from the menu.From the left-side panel, select "Search engine."Click "Manage search engines and site search."To the right of "Site search," hit Add.Fill up the following text fields with the necessary information:Search engine: Type a label or name for the custom search engine, i.e. "Amazon."Shortcut: Type the desired text shortcut you want to use to launch the search engine. In this example, let's assign the term "amazon" as the shortcut for this custom search engine.URL with %s in place of query: Go back to that Amazon tab you used to look up "dress" and copy the resulting web address from the address bar. If the address is a bit long, only copy the URL up to the single keyword you looked up (in this example, dress). Paste it into the URL text field, and replace the word "dress" with "%s."Once all the parameters have been filled up, click Add to finalize. To test the custom site search we just created, open a new tab, type "amazon," and then hit Tab or the spacebar on your keyboard. The Chrome Omnibox should now say "Search Amazon." Simply type in the term you'd like to look up and hit Enter. Keyword-related search results should show up onscreen, right on the Amazon website. The process of creating a site-specific search engine should work for any website that has a built-in search function. For instance, you can create shortcuts for social media platforms like Facebook, Twitter/X, or Reddit. You can also create them for shopping sites that you frequent, such as Etsy, Target, or Walmart, or even Google services like Gmail or Google Drive. In addition, while you have the "Manage search engines and site search" page of the Chrome settings menu open, you also have the option of activating shortcuts for sites listed in the "Inactive shortcuts" section.These are URLs that you have visited in the past to search for things. Any site or page that has a shortcut listed in the "Site search" section can be deactivated, deleted, or made as default. Do note that setting one of these shortcuts as the default will replace Google as Chrome's main search engine.Of course, not all websites and platforms are designed the same way. At some point, you may come across a website like SlashGear that doesn't have an explicit search function. Even though not having a built-in search feature means you can't produce a search URL by visiting the website itself, there are other ways around it. Here's how: Open a new tab on Google Chrome.Type "site:" followed by the website you'd like to search and a term you'd like to look up. For example, to create a custom site search for SlashGear using "Chrome" as a keyword, type "site:slashgear.com chrome" into the new tab's Omnibox.Follow steps 4-9 outlined earlier on how to add a site search shortcut.When you get to the "URL with %s in place of query" text field, copy the resulting search link produced by your SlashGear lookup and paste the entire address. Replace the keyword with "%s."Click Add to finalize.Once the shortcut is created, you can quickly look up articles on SlashGear on Chrome by simply typing "slashgear," hitting Tab or the spacebar on your keyboard, typing in your search term, and hitting enter.

**How to add chrome search engine. How to add search engine in google chrome. How to add search box in outlook. How to add search bar in chrome.**