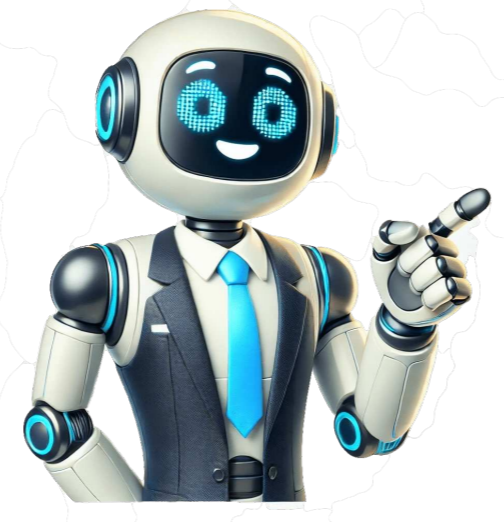


[Click Here](#)



The Panasonic KX-T7731, an advanced hybrid speakerphone, has characteristics that benefit businesses and families. The telephone has a backlit LCD screen that displays the date, currently dialed number, call length and time. Other features include 24 programmable buttons, options for hold, transfer and speakerphone, and a navigation key for selecting volume, display, contrast and function. It also has monitor speakers, automatic redial, headset compatibility and a backlit keypad. Programming one-touch dialing depends on the type of your main unit. If you have a KX-TA624, push the "Program" button. Press either "CO" followed by "2," or the "Program Feature" button. If you have a KX-TA1232, push the "Program" button and dial "99." Push either the "CO" or "Program Feature" button, and dial "2." Enter the phone number. Push the auto dial store key and press "Program." To call the stored number, remove the phone from the hook and press either the "CO" or "PF" button, depending on which was previously allocated. For a KX-TA624, lift the phone off the hook and dial "2." For a KX-TA1232 dial "30." Key in the phone number followed by the speed dial number you wish to associate it with and press "#." To call saved numbers, on a KX-TA624, remove the phone from the hook and press "#" followed by the speed dial number. On a KX-TA1232, replace the # with "3*." To access numbers on the system speed dial, lift the receiver from the hook. Use the auto dial store key and dial the system speed number. To use handsfree answer-back, leave the phone on the hook and press the "Auto Ans Mute" key. You can only pick up an outside line call on the KX-TA1232. Lift the receiver and dial "4*." To pick up a directed call, take the phone from the hook and dial "4" on a KX-TA624, or "41" on a KX-TA1232, followed by the extension number. To pick up a group call, lift the receiver and dial "40." To set automatic call back, dial "6" when you hear the busy tone and hang up the phone. Lift the receiver when you hear callback ringing. To revoke a message you left, on a KX-TA624 key in the receiver's extension number and press the "Message" button twice. On a KX-TA1232, dial "700" followed by the receiver's extension number. To delete your notifications, lift the receiver and dial "700." For a KX-TA624 dial "#." For a KX-TA1232, replace # with your extension number. To set call waiting for outside calls using a KX-TA624, lift the receiver and dial "7311#" and dial "7310#" to cancel. For intercom calls key in "7321#" to set, and "7320#" to cancel. On a KX-TA1232, "7311" sets and "7310" cancels for both. To talk to the new party when you hear the call waiting tone, you can abort your current status by pushing the "CO" or "Intercom" button, or hold your current status by pressing the "Hold" button, followed by the "CO" or "Intercom" key. To have a three-part conference, push the "CONF" button followed by the third party's number. To end the call, press the "CONF" button. To activate Do Not Disturb (DND) lift the receiver and press the "FWD/DND" button. For a FX-TA624 dial "4#" to set, and "0#" to cancel. For a FX-TA1232, dial "1" to set and "0" to cancel. To reset the phone, dial "79#* on a KX-TA624, or "790" on a KX-TA1232. Carefully pack and send it prepaid, adequately insured and preferably in the original carton. Attach a postage-paid letter, detailing the symptom to the outside of the carton. DO NOT send the product to the Executive or Regional Sales offices. They are NOT equipped to make repairs. Panasonic Servicenters for this product are listed in the servicenter directory. Consult your authorized Panasonic dealer for detailed instructions. TO PREVENT THE RISK OF FIRE OR ELECTRIC SHOCK, DO NOT EXPOSE THIS PRODUCT TO RAIN OR ANY TYPE OF MOISTURE. THIS HANDSET EARPIECE IS MAGNETIZED AND MAY RETAIN SMALL FERROUS OBJECTS. Under power failure conditions, this telephone may not operate. Please ensure that a separate telephone, not dependent on local power, is available for use in an emergency. In this manual, the suffix of each model number is omitted. Handset 1 Handset Cord 1 Telephone Line Cord 1 Stand 1 Overlay 1 (Other than KX-T7720, KX-T7750) SERIAL NO. (found on the bottom of the unit) DATE OF PURCHASE NAME OF DEALER For your future reference DEALER'S ADDRESS DEALER'S TEL. NO. Page 2 TalkTo setTo dialpersonal speed dial no. 1 personal speed dial no. To an extensionTo an external partyphone no. extension no. To programTo dialassigned as a One-Touch Dialing buttonphone no. (Check the type of your Main Unit.) desired no. (Check the type of your Main Unit.) system speed dial no. To dialKX-TA624KX-TA1232KX-TA624KX-TA1232KX-TA624KX-TA1232KX-TA624KX-TA12323Page 3Page 4SetCancelTo talk to the new partyTerminating a current statusWhile hearing the Call Waiting toneSetCancelFor outside callsSetCancelFor intercom calls(Check the type of your Main Unit.)While hearing a busy toneWait for an answer.Wait for an answer.HoldingTo retrieve a call at the holding extensionTo retrieve an outside call from another extensionTo retrieve a call on exclusive holdHoldingScreenedextension no. phone no. To an external party(System programming required.)Announce.KX-TA624KX-TA1232Unscreened extension no.Holding a current statusPage 5Page 6Page 7Page 8* The backlit display is only available on the KX-T7730/7731/7735/7736.123467891051314181615171423652 01BACKLIGHT78RINGERPage 9TRANSFER: Used to transfer a call to another party.9DIALING BUTTONS WITH BACKLIGHT(KX-T7731/36): Dialing buttons are backlit when (1) you receive a call, (2) during a conversation, or (3) when BGM is activated at your phone.1011HOLD: Used to place a call on hold.12SP-PHONE (Other than KX-T7750): Used for the handsfree operation.MONITOR (KX-T7750 only): Used for handsfree dialing. You can monitor the other party's voice handsfree.13NAVIGATOR KEY (KX-T7730/7731/7735/7736): Used to adjust the volume and the display contrast, or select desired items.VOLUME KEY (KX-T7720/7750): Used to adjust the volume.Programmable Feature (PF) Button: Used as an One-Touch Dialing button (Button assignment is required.)1416PAUSE: Used to insert a pause during dialing.17MESSAGE: Used to leave a message waiting indication, or call back the party who left the message waiting indication.15Flexible Outside (CO) Line Button: Used to make or receive an outside call. Pressing this button seizes an idle outside line automatically. (Button assignment is required.) Also used as feature buttons. (Button assignment is required.)Press SP-PHONE.Press Up or Down.Press Up or Down.SP-PHONE.Press Left or Right.KX-T7730/7731/7735/7736Slide the lever of the RINGER Volume Selector andBACKLIGHT Illumination Selector to the desired setting.RINGER Message/Ringer Lamp: The Message/Ringer lamp informs you visually that you have a message or a call. When you receive a call, the lamp flashes depending on the ringing pattern. When the ringing pattern is set to Single (Slow flash), Double (Moderate flash), or Triple (Rapid flash) in your PBX, the lamp flashes. When the other ringing patterns are set in your PBX, the lamp may not flash. (e.g., S-Double, Call Waiting Tone1). When someone has left you a message, the lamp is lit continuously.2 01BACKLIGHT 9 BACKLIGHT SW POSITION 2 1 0LCD backlight HIGH LOW OFFDIALING BUTTONS backlightAUTO: The backlight shines only during operation.AUTO AUTO OFFPage 10Page 11Page 12Page 13Page 14Page 15Page 16Quick Reference GuideKX-T7720/KX-T7730Model KX-T7731/KX-T7735Important InformationProprietary Telephones When you ship the product.Carefully pack and send it prepaid, adequately insured and preferably in the original carton. Attach a postage-paid letter, detailing the symptom to the outside of the carton.DO NOT send the product to the Executive or Regional Sales offices. They are NOT equipped to make repairs. Page 2 Features ListOutside (CO) Line buttonFeature numberTalkOff-hookOn-hook* Location of Controls* is shown on page 8.Desired FeatureOperationCallingTo setTo dialpersonal speed dial no. RedialOne-Touch DialingCalling an operatorSpeed Dialing (Personal)To an extensionTo an external partyphone no. extension no.To programTo dialassigned as a One-Touch Dialing buttonphone no.(Check the type of your Main Unit.) desired no.(Check the type of your Main Unit.)Speed Dialing (System)system speed dial no.To dialProgrammable Feature buttonMaking CallsKX-TA624KX-TA1232KX-TA624KX-TA1232KX-TA624KX-TA12323 2 Page 3 Features ListDesired FeatureOperationReceiving CallsWhile on-hookHandsfreeanswerverback(Other than KX-T7750)Picking up a callGroupDirectextension no.Outside (CO) Line (KX-TA1232 only)(Check the type of your Main Unit.) extension no. To setWhile hearing a busy toneTo call you hear callback ringingAutomaticCallback BusyWhen the Dialed Extension is Busy/No AnswerReceiver/SenderTo leave a notificationTo cancel a notificationReceiver's extension no. receiver's extension no.(Check the type of your Main Unit.)To call backTo clear all notificationsyour extension no.(Check the type of your Main Unit.)MessageWaitingKX-TA624KX-TA1232KX-TA624KX-TA1232KX-TA624KX-TA1232 3 Page 4 Features ListDesired FeatureOperationWhen the Dialed Extension is Busy/No AnswerCall WaitingSetCancelTo talk to the new partyTerminating a current statusWhile hearing the Call Waiting toneSetCancelFor outside callsSetCancelFor intercom calls(Check the type of your Main Unit.)Receiver/SenderWhile hearing a busy toneWait for an answer.Wait for an answer.During a ConversationHoldingTo retrieve a call at the holding extensionTo retrieve an outside call from another extensionTo retrieve a call on exclusive holdHoldingScreenedextension no. To an extensionphone no. To an external party/System programming required.)Announce.Holding a callHolding a call exclusivelyTransferring a callKX-TA624KX-TA1232Unscreened to an extensionextension no. Holding a current status Page 5 Features ListDesired FeatureOperationUseful FeaturesPaging(Check the type of your Main Unit.)Announce.All extensionsGroupAll external speakersAll extensions & external speakersgroup no. To answer an announced pageFrom a telephone speakerFrom an external speakerTo pagethird party's no. Three-partyconferenceSetting Absent Messagemessage no. parameter (if required)parameter (if required)message no.(Check the type of your Main Unit.) (Check the type of your Main Unit.) (Check the type of your Main Unit.)All external speakersAll extensions & external speakersexternal speaker no. Specific external speaker External speaker no. KX-TA624KX-TA1232KX-TA624KX-TA1232KX-TA1232KX-TA1232KX-TA624KX-TA1232To setTo cancel 5 Page 6 Features ListDesired FeatureOperationUseful Features(Check the type of your Main Unit.)To an outside lineCancelBusy/No answerAll callsextension no. extension no. Follow Meyour extension no. Cancel Follow Meyour extension no. phone no. line accesscodeBusyTo an outside lineCancelNo answerBusy/No answerextension no. All callsextension no. extension no. Follow Meyour extension no. Cancel Follow Meyour extension no. phone no. Forwarding a call line accesscodeLog-In/Log-OutFor Log-InFor Log-Out(Check the type of your Main Unit.)For Log-InFor Log-OutKX-TA624KX-TA1232KX-TA624KX-TA1232 6 Page 7 Features ListDesired FeatureOperationUseful Featureslock code lock code LockUnlockSetCancelSetCancelLocking your extension(Check the type of your Main Unit.)lock code LockUnlock7777lock code lock code Clearing thesetting(Check the type of your Main Unit.)7777#79#790* Consult your dealer for more details on the operations above.* Do Not Disturb(DND)(Check the type of your Main Unit.)#KX-TA624KX-TA624 (Lock code is 4 digits.)KX-TA1232KX-TA624#KX-TA1232KX-TA1232 (Lock code is 3 digits.) 7 Page 8Location of Controls* The backlit display is only available on the KX-T7730/7731/7735/7736.* The KX-T7750 does not have a microphone.* The headset is an option. Recommended headsets are KX-TCA91 and KX-TCA92.123467891051314181615171423652 01BACKLIGHT78RINGERVolume Selector/BACKLIGHT Illumination Selector1314181615171112Microphone1PROGRAM: Used to enter and exit the programming mode.FWD/DND (Call Forwarding/Do Not Disturb). Used to perform Call Forwarding or Do Not Disturb.2CONF (Conference): Used to establish amultiple party conversation.3INTERCOM: Used to make or receive intercom calls.6AUTO ANS (Auto Answer) (Other than KX-T7750): Used to receive an incoming call in the hands-free mode.MUTE (Other than KX-T7750): Used to mute the microphone during a conversation.VOICE CALL (KX-T7750 only): Used to receive a notification via monitor in place of ringing. Page 9 TRANSFER: Used to transfer a call to another party.9DIALING BUTTONS WITH BACKLIGHT(KX-T7731/36): Dialing buttons are backlit when (1) you receive a call, (2) during a conversation, or (3) when BGM is activated at your phone.1011HOLD: Used to place a call on hold.12SP-PHONE (Other than KX-T7750): Used for the handsfree operation.MONITOR (KX-T7750 only): Used for handsfree dialing. You can monitor the other party's voice handsfree.13NAVIGATOR KEY (KX-T7730/7731/7735/7736): Used to adjust the volume and the display contrast, or select desired items.VOLUME KEY (KX-T7720/7750): Used to adjust the volume.Programmable Feature (PF) Button: Used as an One-Touch Dialing button (Button assignment is required.)1416PAUSE: Used to insert a pause during dialing.17MESSAGE: Used to leave a message waiting indication, or call back the party who left the message waiting indication.15Flexible Outside (CO) Line Button: Used to make or receive an outside call. Pressing this button seizes an idle outside line automatically. (Button assignment is required.) Also used as feature buttons. (Button assignment is required.)Initial SettingsLocation of ControlsSpeaker volume *Press SP-PHONE.Press Up or Down.While on-hook or during a conversationHandset/Headset volume *Press Up or Down.While using the handset or headsetRinger volume/Backlight illumination SP-PHONEDisplay contrast *Press Left or Right.KX-T7730/7731/7735/7736Slide the lever of the RINGER Volume Selector andBACKLIGHT Illumination Selector to the desired setting.RINGER* The above settings may return to default settings if the telephone line cord is disconnected, or the main unit's power is interrupted.18Message/Ringer Lamp: The Message/Ringer lamp informs you visually that you have a message or a call. When you receive a call, the lamp flashes depending on the ringing pattern. When the ringing pattern is set to Single (Slow flash), Double (Moderate flash), or Triple (Rapid flash) in your PBX, the lamp flashes. When the other ringing patterns are set in your PBX, the lamp may not flash. (e.g., S-Double, Call Waiting Tone1). When someone has left you a message, the lamp is lit continuously.201BACKLIGHT 9 BACKLIGHT SW POSITION210LCD backlightHIGHLOWOFFDIALING BUTTONS backlightAUTO: The backlight shines only during operation.AUTO AUTO OFF Quick Reference GuideKX-T7720/KX-T7730Model KX-T7731/KX-T7735Important InformationProprietary Telephones When you ship the product.Carefully pack and send it prepaid, adequately insured and preferably in the original carton. Attach a postage-paid letter, detailing the symptom to the outside of the carton.DO NOT send the product to the Executive or Regional Sales offices. They are NOT equipped to make repairs. Product service: Panasonic Servicenters for this product are listed in the servicenter directory. Consult your authorized Panasonic dealer for detailed instructions. WARNING: TO PREVENT THE RISK OF FIRE OR ELECTRIC SHOCK, DO NOT EXPOSE THIS PRODUCT TO RAIN OR ANY TYPE OF MOISTURE. THIS HANDSET EARPIECE IS MAGNETIZED AND MAY RETAIN SMALL FERROUS OBJECTS. IMPORTANT NOTICE: Under power failure conditions, this telephone may not operate. Please ensure that a separate telephone, not dependent on local power, is available for use in an emergency. Note: In this manual, the suffix of each model number is omitted. Please read this manual before using and save for future reference. Included Accessories: for extra orders, call toll free 1-800-332-5368. Handset 1 Handset Cord 1 Telephone Line Cord 1 Stand 1 Overlay 1 (Other than KX-T7720, KX-T7750) SERIAL NO. (found on the bottom of the unit) DATE OF PURCHASE NAME OF DEALER For your future reference DEALER'S ADDRESS DEALER'S TEL. NO. Page 2 TalkTo setTo dialpersonal speed dial no. 1 personal speed dial no. To an extensionTo an external partyphone no. extension no. To programTo dialassigned as a One-Touch Dialing buttonphone no.(Check the type of your Main Unit.) desired no.(Check the type of your Main Unit.) system speed dial no. To dialKX-TA624KX-TA1232KX-TA624KX-TA1232KX-TA624KX-TA1232KX-TA624KX-TA1232 3 Page 3 Page 4SetCancelTo talk to the new partyTerminating a current statusWhile hearing the Call Waiting toneSetCancelFor outside callsSetCancelFor intercom calls(Check the type of your Main Unit.)While hearing a busy toneWait for an answer.Wait for an answer.HoldingTo retrieve a call at the holding extensionTo retrieve an outside call from another extensionTo retrieve a call on exclusive holdHoldingScreenedextension no. phone no. To an external party(System programming required.)Announce.KX-TA624KX-TA1232Unscreened extension no.Holding a current statusPage 5Page 6Page 7Page 8* The backlit display is only available on the KX-T7730/7731/7735/7736.123467891051314181615171423652 01BACKLIGHT78RINGERPage 9TRANSFER: Used to transfer a call to another party.9DIALING BUTTONS WITH BACKLIGHT(KX-T7731/36): Dialing buttons are backlit when (1) you receive a call, (2) during a conversation, or (3) when BGM is activated at your phone.1011HOLD: Used to place a call on hold.12SP-PHONE (Other than KX-T7750): Used for the handsfree operation.MONITOR (KX-T7750 only): Used for handsfree dialing. You can monitor the other party's voice handsfree.13NAVIGATOR KEY (KX-T7730/7731/7735/7736): Used to adjust the volume and the display contrast, or select desired items.VOLUME KEY (KX-T7720/7750): Used to adjust the volume.Programmable Feature (PF) Button: Used as an One-Touch Dialing button (Button assignment is required.)1416PAUSE: Used to insert a pause during dialing.17MESSAGE: Used to leave a message waiting indication, or call back the party who left the message waiting indication.15Flexible Outside (CO) Line Button: Used to make or receive an outside call. Pressing this button seizes an idle outside line automatically. (Button assignment is required.) Also used as feature buttons. (Button assignment is required.)Press SP-PHONE.Press Up or Down.Press Up or Down.SP-PHONE.Press Left or Right.KX-T7730/7731/7735/7736Slide the lever of the RINGER Volume Selector andBACKLIGHT Illumination Selector to the desired setting.RINGER Message/Ringer Lamp: The Message/Ringer lamp informs you visually that you have a message or a call. When you receive a call, the lamp flashes depending on the ringing pattern. When the ringing pattern is set to Single (Slow flash), Double (Moderate flash), or Triple (Rapid flash) in your PBX, the lamp flashes. When the other ringing patterns are set in your PBX, the lamp may not flash. (e.g., S-Double, Call Waiting Tone1). When someone has left you a message, the lamp is lit continuously.2 01BACKLIGHT 9 BACKLIGHT SW POSITION 2 1 0LCD backlight HIGH LOW OFFDIALING BUTTONS backlightAUTO: The backlight shines only during operation.AUTO AUTO OFFPage 10Page 11Page 12Page 13Page 14Page 15Page 16Using a Display Proprietary TelephoneNew: Call records that have not previously been viewed.Old: Call records that have previously been viewed.Both new and old call records are stored in each personal and common area. To view caller information and call back a callerDisplay PTWhen the Caller ID Indication Personal/Common button is lit(Caller ID Indication Personal/Common)Press Caller ID Indication Personal/Common.Off-hook.(Caller ID Indication Personal/Common)ORPress Caller ID Indication Personal/Common orthe Up or Down Navigator Key (KX-T7735 only) until the caller information is displayed.(Caller ID Indication Personal/Common)Press Caller ID Indication Personal/Common.002.0011223344JOHN WHITEMay15 10:23AM002:JOHN WHITE002: 0011223344002: May15 10:23AMPress # or Caller ID Selection Personal/Common to see other information on a PT with a one-line display. A PT user may press a CO button or dial an outside (CO) line access number first to seize a specified outside (CO) line. To erase caller informationDisplay PTWhile viewing caller informationPress TRANSFER. Only 12 digits (or characters) of a caller's number (or name) can be displayed even though up to 16 digits (or characters) of information can be received. To scroll the display, press the FWD/DND (Call Forwarding/Do Not Disturb) button. To return to the idle status display, go off-hook and then on-hook. The display also returns to the idle status display automatically if no operation is performed for 20 seconds. To modify the logged telephone number, press the HOLD button to erase digits and then use 0 to 9, and PAUSE to add numbers in front of the first digit. The Panasonic KX-TES824 and KX-TEM824 are highly regarded in the realm of business telecommunication systems, particularly for small to medium-sized enterprises seeking reliability and a feature-rich experience. These Panasonic systems stand out due to their advanced functionalities, robust performance, and exceptional scalability, making them ideal choices for organizations looking to streamline their communications. Both the KX-TES824 and KX-TEM824 facilitate a hybrid system that supports both analog and digital telephones, allowing users the flexibility to choose the type of phones that best suit their needs. The systems can accommodate up to 24 extensions, with the KX-TEM824 providing the added benefit of additional trunk lines. This scalability ensures that as a business grows, adding more lines and extensions is a straightforward process. Key features include integrated voicemail capabilities, which can enhance customer service and streamline internal communication. The voicemail system allows for features like voicemail-to-email, ensuring prompt responses to messages. The KX-TEM824 additionally supports more sophisticated communication options with digital integration for advanced user functionalities. The KX-TES824 and KX-TEM824 systems are equipped with built-in Caller ID and call waiting features, contributing to improved call management. The automated attendant function is another significant aspect, as it enables businesses to direct calls efficiently without needing a dedicated receptionist, thus saving costs and enhancing productivity. VoIP support is a critical component of the KX-TEM824, enabling users to harness the advantages of Voice over Internet Protocol technology. This feature not only lowers communication costs but also improves call quality. Moreover, the systems support diverse network configurations, making installation and integration into existing infrastructures seamless. In terms of user interface, both systems boast an intuitive programming menu that can be accessed via the telephone handset. This allows users to customize their settings, modify extensions, and manage features without the need for specialized training. Multiple call handling options, multi-on-hold functionalities, and intercom features further enhance the user experience. The KX-TES824 and KX-TEM824 are designed with reliability in mind, equipped to endure the demanding environment of business operations. Overall, the Panasonic KX-TES824 and KX-TEM824 represent a powerful solution for business communications, offering versatility, ease of use, and the technological edge needed to thrive in today's competitive landscape.

How to check call history on panasonic kx-dt343. How to check call history on panasonic kx-t7730. How to check call history in panasonic kx-t7665.