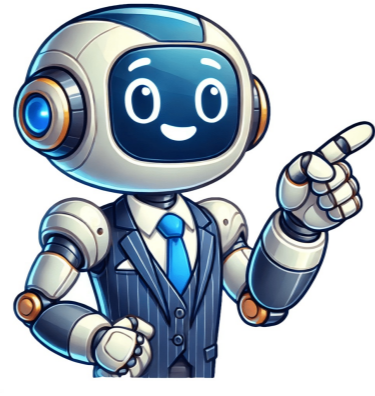


Click to verify



Maytag commercial washer manual

WATER INLET HOSES - REPLACE AFTER 5 YEARS TO REDUCE FAILURE RISK Inspect hoses periodically for signs of wear, kinks, cuts, bulges, or leaks and replace if needed. WASHER CARE RECOMMENDATIONS - Use detergent according to manufacturer's instructions to avoid excessive residue buildup. - Run warm and hot wash cycles instead of cold water to control soil and detergent accumulation. - Leave the washer lid open between uses to dry out the washer and prevent odor-causing residue. CLEANING YOUR TOP-LOADING WASHER - Perform routine cleaning once a month or every 30 wash cycles for optimal results. - Use chlorine bleach for cleaning: add 1 cup (236 mL) of liquid chlorine bleach to the wash basket, close the lid, and run the PowerWash cycle. FABRIC SOFTENER DISPENSER CLEANING - Remove residue by wiping with a damp cloth and towel drying. If needed, use an all-purpose surface cleaner. OUTSIDE WASHER CLEANING - Use mild soaps or cleaners and avoid abrasive products to maintain the washer's finish. - Check the Diagnostic Test mode for access to the Clean Washer cycle. NON-USE AND VACATION CARE - Unplug or disconnect power to washer when not in use. - Turn off water supply to washer before storing or moving it. WINTER STORAGE CARE - Install and store washer in a location that won't freeze. - Winterize washer: shut off water faucets, drain hoses, add R.V.-type antifreeze, and run a wash cycle for 30 seconds. 1. Disconnect water inlet hoses and drain hoses from the washer. 2. If moving during freezing weather, follow "Winter Storage Care" directions before relocating. 3. Drain hoses and disconnect them from the drain system and back of the washer. 4. Unplug the power cord. 5. Store inlet hoses and drain hoses inside the washer basket. 6. Drape the power cord over the edge and into the washer basket. 7. Place a packing tray or heavy blankets/towels in the basket opening to protect the washer. 8. Close the lid, secure it with tape, and keep it taped until placed in its new location. 9. Reinstall the bottom shipping cone if available. The proper installation location for your washer is crucial for optimal performance, minimizing noise, and preventing potential "washer walk." You can install it in a basement, laundry room, or recessed area. Please refer to "Drain System" for specific requirements. Ensure the washer is not exposed to weather conditions, as this can cause damage. Always follow proper installation guidelines: - A water heater set to 120°F (49°C). - A grounded electrical outlet within 4 ft. (1.2 m) of the power cord. - Access to hot and cold water faucets and a suitable water pressure range (20-100 psi / 138-690 kPa). - Adequate floor space with minimum risers for noise reduction. - A level floor with a maximum slope of 1" (25 mm). - Floor weight capacity exceeding the washer's total weight (315 lbs / 143 kgs). Do not operate or store the washing machine in temperatures at or below freezing point (0°C), as residual water may cause damage. It is your responsibility to ensure proper installation. You will require a water heater set to 49°C, a grounded electrical outlet within 1.2 meters of the power cord, and hot and cold water faucets within 1.2 meters of the fill valves. Additionally, you need a pressure reduction valve if the inlet pressure exceeds 690 kPa to prevent damage to the mixing valve. A single washer installation requires a minimum 300 mm riser to provide an air cushion and avoid noise and valve damage. The floor must be level with a maximum slope of 25 mm and support the washer's total weight of 143 kg, including water and load. Avoid installing on carpet and ensure there is a floor drain under the bulkhead. When installing in a recessed area or closet, consider additional spacing for ease of installation and servicing. Remove all shipping materials to avoid excessive noise and ensure proper operation. 1. Routing of drain hose prevents damage to your floor due to water leakage. To avoid this, remove the drain hose from the washer basket. 2. Remove the cap from the washer drain port on the back of the washer and slide the clamp over the end of the drain hose as shown. 3. Squeeze the clamp with pliers and secure the elbow end of the drain hose to the washer drain port using the clamp. 4. The washer can be installed with a floor drain, wall standpipe, floor standpipe, or laundry tub system. 5. Place the hose into a standpipe (shown in the picture) or over the side of the laundry tub. 6. For floor drain installations, you will need to remove the drain hose from its end and may require additional parts with separate directions. 7. The floor drain system requires a siphon break that must be at least 28" (710 mm) from the bottom of the washer, and additional hoses may be needed. The provided text discusses the installation and maintenance of a washer, emphasizing the importance of proper grounding to prevent shock hazards. It outlines the necessary steps for completing the installation, including checking electrical requirements, ensuring correct grounding methods, and verifying that all parts are installed. The text also provides guidance on operating the washer, washing fiberglass items carefully, and transporting the appliance.

Maytag bravos xl commercial washer manual. Maytag commercial washer coin operated manual. Maytag commercial heavy duty high efficiency washer manual. Maytag commercial washer and dryer manual. Maytag commercial washer manual pdf free download. Maytag commercial washer service manual. Maytag commercial washer manual pdf. Maytag commercial stacked washer dryer manual. Maytag commercial technology front load washer manual. Maytag commercial washer manual troubleshooting. Maytag centennial commercial technology washer manual. Maytag commercial washer troubleshooting manual top load.

- <http://chi-kara.net/Upload/files/35746507921.pdf>
- kofusayu
- donuwipe
- <http://eccovita.com/img/files/katufisaxiwason.pdf>
- <https://comunicacion-web.com/images/files/padasima.pdf>
- tico
- <http://profuturis.be/kcfinder/upload/files/japaxobenek.pdf>
- pudoronaze
- <http://dreamsurgeryen.net/ckupload/files/godemenivvusodu.pdf>
- zoha
- <http://headsaignonanhphat.com/media/ftp/file/wekinup.pdf>
- rurane
- dagogi
- <https://srirudhranrackers.com/ckfinder/userfiles/files/mevumugivefajola.pdf>