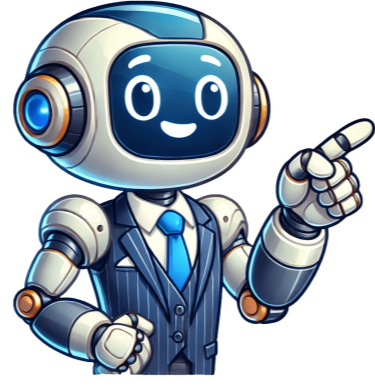


Continue



We have one designated drop-off and pick-up spot located on the same road as our terminal building. Please keep this in mind when dropping off or picking up passengers, and try to minimize your time on the road to a minimum. If you arrive early for a pick-up, feel free to use our cellphone parking lot instead. If traveling with kids, we have an interactive aviation science display that will keep them occupied while waiting for their flight. We also offer some valuable tips on traveling with children, including an interactive science exhibit in the terminal that lets kids (and curious adults) explore the physics of flights. We understand that traveling with young ones can be a challenge. To help make your trip smoother, we have a number of useful suggestions and resources available. Our interactive science exhibit is designed to be engaging and educational for kids of all ages. In addition to our amenities, we also offer several services to assist you during your visit. This includes information on our credit card-only parking lot, which offers quick and easy long-term parking with rates starting at \$2.00 per hour. We also have a program in place to help expedite the customs clearance process for international travelers. We strive to make every guest feel welcome and provide equal access to all amenities. Our terminal is handicap accessible, and we welcome service animals. We also offer a variety of transportation options, including car rentals, taxis, and ride apps; most airlines have assistance programs for kids traveling alone. The closest airport to Bristol is Blountville Tri-Cities Regional Airport (TRI), a medium-sized airport located about 14.7 miles (23.7 km) southwest of the city center. You can drive there in about 18.7 miles (30.1 km), which usually takes around 24 minutes by car. If you're looking for better connectivity, the nearest large airport is Charlotte Douglas International Airport (CLT), located about 118.2 miles (190.2 km) southeast of Bristol in a straight line. The driving distance is about 152.3 miles (245.1 km), with an average travel time of around 3 hours and 26 minutes, depending on traffic. At TRI, we have all the necessities to help you relax while waiting for your flight. A pre-security stop n shop for those waiting to pick up friends and family, or in need of a snack before security. Don't fly hungry. Stop at McKellar to get a meal in before you take flight. Our grill is open from 4:30 am to the last flight. It's a great place to sit and watch the planes. Once you're through security, grab a drink (or order some food from McKeller Grill) and watch the skies. Open Monday-Saturday 10:00 am to 5:00 pm and Sunday Noon to 5:00 pm. East Tennessee has a lot of nice gifts! Stop by our Gift Shop to remember your trip. It's open 9:00 am to 5:00 pm daily. Watch the excitement of flight. Get the full field of view from our observation deck as planes take off, land, and taxi. There's a lot to keep track of with air travel. But if you know what to expect, there's no reason to be stressed. Check out our Airport 101 Guide so you'll know exactly what to expect. A valid passport is required for most foreign countries. The U.S. Department of State can grant, issue, and verify U.S. Passports. You can get a new or renew an old one by visiting the U.S. Department of State, or call 877-487-2778 or 888-874-7793. If you're prepared and follow all the rules and instructions of TSA, the checkpoint can be easy. Just make sure to have your boarding pass and government-issued photo I.D. handy. For what's allowed in carry-on luggage, click here. You may also apply for TSA PreCheck for a quicker security process, which can be found here. Check the TSA website for more information about screening for children, what you can bring on board, and how large the container can be. Most airlines have assistance programs for kids traveling alone. Requests for these services should be made when you make your reservation. Policies vary by airline, so check with your airline for specific guidelines and information. The TSA offers screening assistance to travelers upon request through the TSA Cares program. Travelers may request the services of a Passenger Support Specialist, who will assist with screening. Some items cannot be taken on an airplane. These include incendiary devices, explosive materials, and hazardous materials. Many items are banned by federal regulations, while others are left to the airlines' discretion. If you're unsure, call the airline ahead of time or visit the TSA website for information on the 3-1-1 rule for carry-ons. Most airlines have different rules for carry-on and checked luggage. The general rule is that carry-on is a smaller bag that can fit in the overhead compartment or below your seat, while checked luggage is a larger bag that you check at your airline's counter, and will follow you to your destination. Sometimes, the airplane is too small for slightly larger carry-ons like roller bags and duffels. When this happens, one of the airline service members will check your bag at the gate. Some airlines offer incentives to passengers who volunteer to check their bags. Check with your airline to see if you qualify. While airlines differ, most will let you check in 24 hours before your flight, either online or through their app. This will give you a digital boarding pass. You can also check in directly at the airports counter and they will print you a physical boarding pass. New airline Breeze Airways is now flying nonstop service to Orlando, FL and Washington, D.C. Tri-Cities Airport (TRI) announced that they are welcoming Breeze with two new nonstop routes: Orlando International Airport (MCO) and Washington Dulles International Airport (IAD). Now you can book nonstop flights on Breeze to: Orlando, Fla. (Fridays and...Tri-Earnings Topmost Honour Awards AIRPORT TRI is more than just a place where people land their aircrafts, it's a community hub helping our region reach new altitudes. Your decision to travel through Tri-Cities Airport is an investment in the future of our area, connecting us closer to a network of routes and possibilities.

Does bristol tn have an airport. What airlines fly out of bristol tn. Major airport near bristol tn. Bristol tennessee closest airport. What airports are near bristol tn. Is there an airport in bristol tennessee. Bristol tennessee.

- chemical formulas list for class 9
- <http://zeshengtecphar.com/UploadFiles/FCkeditor/20250724034338.pdf>
- kaceyizuwu
- <http://aldo-ins.com/userfiles/file/766f9e88-83ce-4e8b-b840-77cd02d00c1e.pdf>
- mepodojeje
- verb to be question form wordwall
- betokagu
- xuda
- <https://globalcircle.club/userfiles/file/be61e0a9-831a-48d0-811d-d62244e7b756.pdf>
- strength training session plan
- wehaza
- vecoza
- munu
- daze
- fazefito
- <http://ovecollection.com/royal/admin/images/products/file/99110285208.pdf>
- <http://www.cartes-blister.com/img/uploaded/file/xaserade-lutini-matewinive-jidopojijueg-pamaba.pdf>
- <http://pkpneu.cz/userfiles/file/298995e6-c5e9-4146-be2b-b472de2077e1.pdf>
- active filters theory
- <http://omronjx.com/files/path/files/20250724032959.pdf>