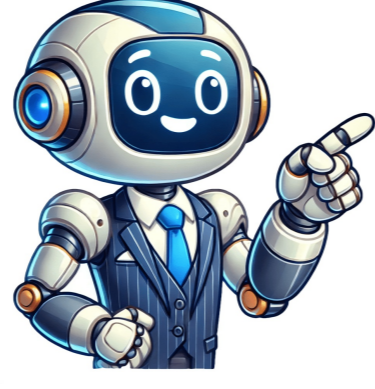


Continue



In this article I will offer very simple but complete step-by-step instructions for how to pair Beats Studio 3 wireless headphones to any device an Apple PC or iPhone, a Windows PC or Android phone. First well cover the most basic steps, which should help you get your Studio 3 headphones connected quickly and easily, and then well go over some basic troubleshooting steps if it doesnt work. Then at the end of the article I will offer more detailed instructions for finding and using the Bluetooth page on any phone or computer Apple, Android or Windows. Make sure that Bluetooth is turned on on your phone or PC. For specific instructions on how to do this with an Apple phone or PC, an Android phone or a Windows PC, see below Make sure your Beats Studio3 Headphones are close enough to the device. Effective Bluetooth range can be several hundred feet, but for pairing I like to have the headphones and the device right next to earth other Power on your Beats Studio3 Headphones and put them in pairing mode If this is the first time youve used them, your Studio 3 Headphones should enter pairing mode automatically when turned onlf theyve been used before, and you are trying to pair to a new device, you will have to place them in pairing mode manually by pressing the power button located on the bottom of the right earcup for five seconds until the fuel gauge lights flash Go back to your devices Bluetooth page and select your Studio3 Headphones, and you should be up and running. If your Beats Studio 3 Headphones are powered on and in pairing mode, they should appear here. If not, go back to the previous step and make certain the Beats Studio 3 Headphones are close enough to your device.Also, If you dont see your Beats Studio 3 Headphones listed, you can refresh the list, or turn Bluetooth off and on Make sure your Beats Studio 3 Headphones are not just on and pairing, but are sufficiently charged Remember that your headphones and device have to be in range of each other effective Bluetooth range can be several hundred feet, but when pairing I always have them right next to each other to make sure Make sure your Beats are not actively paired with another device, and your phone of PC is also not actively paired with other Bluetooth headphones, speakers or other devices Power down your Studio 3 Headphones and restart your PC or phone, and try the process again If all else fails, you can always contact the Beats Online Support Page And finally, if youve arrived at this article, but you actually have a different pair of Beats headphones that is, not Beats Studio3, but a different model you can go to our more general article: How To Pair Beats Headphones: A Simple Guide. On your iPhone go to Settings, and then to Bluetooth Turn Bluetooth on Make sure your Beats Studio 3 Headphones are in Pairing Mode (see sections above) Tap on the name of your Beats Studio 3 Headphones Enter any required passwords or pin codes Click Yes or Confirm for any ensuing pop-upsGo to Apple menu, then System Preferences, and then Bluetooth Make sure your Beats Studio 3 Headphones are in Pairing Mode (see sections above) Select your Beats Studio 3 Headphones and click on Connect Enter any required passwords or pin codes Click Yes or Confirm for any ensuing pop-upsSwipe down from the top of your screen Find the Bluetooth icon and press and hold it until the Bluetooth page opens Make sure Bluetooth is turned on Make sure your Beats Studio 3 Headphones are in Pairing Mode (see sections above) Tap on the name of your Beats Studio 3 Headphones If you do not see your Beats Studio 3 Headphones listed, you may have to press one of the following (depending on your device):Connect New Device RefreshEnter any required passwords or pin codes Click Yes or Confirm for any ensuing pop-upsGo to Settings, and then to Devices Turn Bluetooth on Make sure your Beats Studio 3 Headphones are in Pairing Mode (see sections above) Click on Add Bluetooth or other device Select your Beats Studio 3 Headphones from the pop-up list and click on Connect Enter any required passwords or pin codes Click Yes or Confirm for any ensuing pop-ups Learn how to customize your Beats, pair your device, update firmware, and more. Learn how to customize your Beats, pair your device, update firmware, and more. Browse the user guide Learn where to look for the serial number on your Beats. Learn where to look for the serial number on your Beats. Learn where to look for the serial number on your Beats. Find serial number Learn about whats covered under your warranty, service options, and repair pricing. Learn about whats covered under your warranty, service options, and repair pricing. View Service and warranty Beats Studio 3 Setup: Expert Guide Setting up your Beats Studio 3 wireless headphones is a straightforward process that can be completed in a few simple steps. Whether youre looking to connect your headphones to your iPhone, Android device, or computer, this expert guide will walk you through the process and provide you with some valuable tips to get the most out of your Beats Studio 3. Understanding the Basics Before we dive into the setup process, its essential to understand the basic components of your Beats Studio 3 headphones. The headphones come with a carrying case, a USB charging cable, and a 3.5mm RemoteTalk cable. The headphones themselves have a power button, a volume control, and a multifunction button that can be used to play, pause, and skip tracks. Connecting to an iPhone or iPad To connect your Beats Studio 3 headphones to an iPhone or iPad, follow these steps: Make sure your iPhone or iPad is running the latest version of iOS.Put your Beats Studio 3 headphones in pairing mode by pressing and holding the power button until the LED light starts flashing.On your Android device, go to Settings > Bluetooth and look for Beats Studio3 in the list of available devices.Tap on Beats Studio3 to connect your headphones to your device.You may be prompted to enter a passcode; if so, enter 0000 to complete the pairing process. Connecting to an Android Device To connect your Beats Studio 3 headphones to an Android device, follow these steps: Make sure your Android device is running the latest version of the operating system.Put your Beats Studio 3 headphones in pairing mode by pressing and holding the power button until the LED light starts flashing.On your Android device, go to Settings > Bluetooth and look for Beats Studio3 in the list of available devices.Tap on Beats Studio3 to connect your headphones to your device.You may be prompted to enter a passcode; if so, enter 0000 to complete the pairing process. Connecting to a Computer To connect your Beats Studio 3 headphones to a computer, follow these steps: Make sure your computer is running the latest version of the operating system.Put your Beats Studio 3 headphones in pairing mode by pressing and holding the power button until the LED light starts flashing.On your computer, go to the Bluetooth settings and look for Beats Studio3 in the list of available devices.Click on Beats Studio3 to connect your headphones to your computer.You may be prompted to enter a passcode; if so, enter 0000 to complete the pairing process. Tips and Tricks Now that youve connected your Beats Studio 3 headphones to your device, here are some tips and tricks to get the most out of your headphones: Use the Beats app to customize your headphones settings, such as adjusting the noise cancellation levels or setting up custom controls.Use the multifunction button to play, pause, and skip tracks, as well as to answer and end calls.Use the volume control to adjust the volume of your music or calls.Use the power button to turn your headphones on and off, as well as to put them in pairing mode.Make sure to charge your headphones regularly to ensure they have enough power to last throughout the day. One of the standout features of the Beats Studio 3 headphones is their noise cancellation technology. This technology uses advanced algorithms to detect and eliminate background noise, providing a more immersive listening experience. To get the most out of this feature, make sure to customize the noise cancellation levels in the Beats app. Troubleshooting Common Issues If youre experiencing any issues with your Beats Studio 3 headphones, here are some common troubleshooting steps to try: If your headphones wont connect to your device, try resetting them by pressing and holding the power button for five seconds. Release the button once you see the fuel gauge LEDs flashing. To pair the headphones to an iPhone/iPad, get them in pairing mode and place them within five centimeters or two inches of the iPhone/iPad. A pop-up will appear on the iPhone/iPad, then press Connect, and you are done. If the pop-up does not show, get the headphones in pairing mode and go to the Bluetooth settings to complete the pairing process. This works for Android and other devices. Reset the Beats headphones by pressing the power and volume down buttons simultaneously. Get the Beats Studio 3 Headphones in Pairing ModeBefore you get the headphones in pairing mode, ensure they are adequately charged. All the fuel gauge LEDs will light up once the headphones are fully charged.Alternatively, you can charge the headphones for ten minutes and pair them to a source device, providing at least three hours of use. It will take one and a half hours to charge the headphones fully.Once charged, turn on the Beat Studio 3 headphones by pressing the power button for one second. The power button is on the right earcup just above the fuel gauge and has an LED embedded in it.If the headphones have never been paired to any device, you should see the fuel gauge LEDs flashing to show that the headphones are discoverable.However, if the LED does not flash, the headphones have previously been connected to a different device.In such instances, you can force the Beats Studio 3 into pairing mode by pressing and holding the power button for five seconds. Release the button once you see the fuel gauge LEDs flashing.Press the power button (on the right cup) until you see the fuel gauge LEDs start flashing. This means your Beats Studio 3 headphones are in pairing mode.The headphones are discoverable at this point, and you can continue the pairing process on the source device.Below are steps for pairing the headphones to different devices using Bluetooth.Initiating Pairing Mode on Beats Studio 3 HeadphonesHow to Enter Pairing Mode on Beats Studio 3?Pair the Beats Studio 3 Headphones with an iPhone/iPadOnce the headphones are powered on and in pairing mode, place them within two inches or five centimeters of your iPhone or iPad.Assuming the iPhone is unlocked and Bluetooth is activated, you will see a pop-up on the screen prompting you to connect to the headphones.Tap Connect and wait as the device establishes a connection to the headphones.If the headphones are still connected to another device and are not in pairing mode, a prompt will appear on the screen asking you to press and hold the power button for five seconds. That will get the headphones into pairing mode, and you can now tap Connect on the iPhone/iPad.Once the connection is established, the pop-up will show the headphones name and battery percentage, and you can tap Done to complete the pairing process.When the first pop-up on the iPhone appears, tap Connect. Then, tap Done.If the pop-up does not appear on the iPhone screen, you can still connect it to the headphones using the traditional method.The steps to follow are: Open the Settings app on the iPhone/iPad. Select Bluetooth and ensure it is turned on by tapping the toggle switch to highlight it green. Wait a few seconds as the device scans for available Bluetooth devices. The headphones will appear under Other devices with the name Beats Studio 3. Tap the headphones name, and they should pair with your device.Pairing Beats Studio 3 with an iPhone/iPadBeats Studio 3 Set Up Manual GuidePair the Beats Studio 3 Headphones with an Android DeviceThe steps to pair your Beats Studio 3 headphones to an Android device are as follows: Open Settings, then select Connected devices. Then tap > Pair new device, and your device will enable Bluetooth and scan for devices broadcasting their signal. The Beats Studio 3 will appear under Available devices. Select the headphones, then tap Pair and accept any pairing prompts that will come up. You can also download the Beats Android app and use it to pair your phone with the Beats headphones.Simply open the app, agree to the privacy policy, and select Get Started, then grant the app the permissions it will ask you to grant.From here, the app will guide you through the pairing process, and you can use it to find relevant information regarding the headphones, like the serial number.Pairing Beats Studio 3 with an Android DeviceHow to Pair Beats Studio 3 Headphones to Android Recommended Reading : Pair the Beats Studio 3 Headphones with a MacBookBelow are instructions on how you can pair a MacBook using macOS Ventura 13 to the Beats Studio 3 headphones: Select The Apple menu, then navigate to System Settings > Bluetooth. Find the Beats Solo 3 headphones among the available devices and place the mouse pointer on them. Select Connect, and the Beats should pair with your MacBook.If you have a different version of the Mac operating system, the instructions to enable Bluetooth and pair devices are available on the Apple website.Pairing Beats Studio 3 with a MacBookHow to Pair Your Beats to a Mac | Beats Studio3 WirelessPair the Beats Studio 3 Headphones to a Windows Device Select the Start option from the Taskbar. Then go to Settings and click Bluetooth & devices. Ensure Bluetooth is enabled and then click + Add device > Bluetooth. The Windows device will scan for available devices, and the headphones will appear as Beats Studio 3. Select the headphones, and they will pair with your Windows device. The above instructions apply to Windows 11 devices, but you can find instructions for older versions on the Microsoft support page. There you will also find instructions on how to forget the headphones from your device.Pairing Beats Studio 3 with a Windows DeviceHow to Pair Beats Studio 3 with Windows PC / Laptop?How to Reset the Beats Studio 3 Headphones?It is crucial that you know how to reset the headphones in case of a malfunction or pairing issue. Fortunately, the resetting procedure is easy and involves using two buttons, as you shall see in the instructions below: First, forget the headphones from the Bluetooth settings on the source device. Then press the power and volume down buttons for ten seconds. The volume down button is on the left earcup just below the b logo. Release the buttons once the LEDs on the headphones flash.To reset Beats Studio 3, press the POWER and VOL. DOWN buttons simultaneously for 10 seconds. You can now connect them to any device.Resetting Beats Studio 3How to Factory Reset Your Beats | Beats Studio3 Wireless Frequently Asked Questions Question: How do you enable pairing mode on Beats Studio 3? Answer: You power on the Beats by pressing the power button for one second. Then press and hold the power button for five seconds and release the button once you see the fuel gauge LEDs flash white. That means the headphones are in pairing mode. Question: How do I reset my Studio 3 Beats? Answer: First, disconnect the headphones from any device they are connected to. Then forget the headphones from the list of connected Bluetooth devices in the source devices Bluetooth settings. Finally, press the power and volume down buttons simultaneously for ten seconds and only release them once you see the LEDs on the headphones flash. ConclusionPairing the headphones to any device is easy as long as you know how to get the headphones in pairing mode. From there, all you have to do is go to the Bluetooth settings on your device and find the Beats among the available devices.If you have issues with the pairing, you can go through the troubleshooting guide or contact the customer support service team. Happy listening. Was this article helpful? Beats Studio 3 Setup: Expert Guide Setting up your Beats Studio 3 wireless headphones is a straightforward process that can be completed in a few simple steps. Whether youre looking to connect your headphones to your iPhone, Android device, or computer, this expert guide will walk you through the process and provide you with some valuable tips to get the most out of your Beats Studio 3. Understanding the Basics Before we dive into the setup process, its essential to understand the basic components of your Beats Studio 3 headphones. The headphones come with a carrying case, a USB charging cable, and a 3.5mm RemoteTalk cable. The headphones themselves have a power button, a volume control, and a multifunction button that can be used to play, pause, and skip tracks. Connecting to an iPhone or iPad To connect your Beats Studio 3 headphones to an iPhone or iPad, follow these steps: Make sure your iPhone or iPad is running the latest version of iOS.Put your Beats Studio 3 headphones in pairing mode by pressing and holding the power button until the LED light starts flashing.On your iPhone or iPad, go to Settings > Bluetooth and look for Beats Studio3 in the list of available devices.Tap on Beats Studio3 to connect your headphones to your device.You may be prompted to enter a passcode; if so, enter 0000 to complete the pairing process. Connecting to an Android Device To connect your Beats Studio 3 headphones to an Android device, follow these steps: Make sure your Android device is running the latest version of the operating system.Put your Beats Studio 3 headphones in pairing mode by pressing and holding the power button until the LED light starts flashing.On your Android device, go to Settings > Bluetooth and look for Beats Studio3 in the list of available devices.Click on Beats Studio3 to connect your headphones to your device.You may be prompted to enter a passcode; if so, enter 0000 to complete the pairing process. Connecting to a Computer To connect your Beats Studio 3 headphones to a computer, follow these steps: Make sure your computer is running the latest version of the operating system.Put your Beats Studio 3 headphones in pairing mode by pressing and holding the power button until the LED light starts flashing.On your computer, go to the Bluetooth settings and look for Beats Studio3 in the list of available devices.Click on Beats Studio3 to connect your headphones to your computer.You may be prompted to enter a passcode; if so, enter 0000 to complete the pairing process. Tips and Tricks Now that youve connected your Beats Studio 3 headphones to your device, here are some tips and tricks to get the most out of your headphones: Use the Beats app to customize your headphones settings, such as adjusting the noise cancellation levels or setting up custom controls.Use the multifunction button to play, pause, and skip tracks, as well as to answer and end calls.Use the volume control to adjust the volume of your music or calls.Use the power button to turn your headphones on and off, as well as to put them in pairing mode.Make sure to charge your headphones regularly to ensure they have enough power to last throughout the day. One of the standout features of the Beats Studio 3 headphones is their noise cancellation technology. This technology uses advanced algorithms to detect and eliminate background noise, providing a more immersive listening experience. To get the most out of this feature, make sure to customize the noise cancellation levels in the Beats app. Troubleshooting Common Issues If youre experiencing any issues with your Beats Studio 3 headphones, here are some common troubleshooting steps to try: If your headphones wont connect to your device, try resetting them by pressing and holding the power button and the volume down button at the same time for 10 seconds.If your headphones are not producing sound, try checking the volume levels on your device and making sure that its properly connected to both the headphones and the power source. + To reset your Beats Studio 3 headphones, press and hold the power button and the volume down button at the same time for 10 seconds. + To customize the noise cancellation levels on your Beats Studio 3 headphones, open the Beats app and go to the settings menu. From there, you can adjust the noise cancellation levels to your liking. + To troubleshoot common issues with your Beats Studio 3 headphones, try resetting them, checking the volume levels on your device, and making sure that the headphones are properly connected. In conclusion, setting up your Beats Studio 3 headphones is a straightforward process that can be completed in a few simple steps. By following the tips and tricks outlined in this expert guide, you can get the most out of your headphones and enjoy a more immersive listening experience. Whether youre listening to music, watching videos, or taking calls, your Beats Studio 3 headphones are sure to provide you with exceptional sound quality and comfort. In this article I will offer very simple but complete step-by-step instructions for how to pair Beats Studio 3 wireless headphones to any device an Apple PC or iPhone, a Windows PC or Android phone. First well cover the most basic steps, which should help you get your Studio 3 headphones connected quickly and easily, and then well go over some basic troubleshooting steps if it doesnt work. Then at the end of the article I will offer more detailed instructions for finding and using the Bluetooth page on any phone or computer Apple, Android or Windows. Make sure that Bluetooth is turned on on your phone or PC. For specific instructions on how to do this with an Apple phone or PC, an Android phone or a Windows PC, see below Make sure your Beats Studio3 Headphones are close enough to the device. Effective Bluetooth range can be several hundred feet, but for pairing I like to have the headphones and the device right next to earth other Power on your Beats Studio3 Headphones and put them in pairing mode If this is the first time youve used them, your Studio 3 Headphones should enter pairing mode automatically when turned onlf theyve been used before, and you are trying to pair to a new device, you will have to place them in pairing mode manually by pressing the power button located on the bottom of the right earcup for five seconds until the fuel gauge lights flash Go back to your devices Bluetooth page and select your Studio3 Headphones, and you should be up and running. If your Beats Studio 3 Headphones are powered on and in pairing mode, they should appear here. If not, go back to the previous step and make certain the Beats Studio 3 Headphones are close enough to your device.Also, If you dont see your Beats Studio 3 Headphones listed, you can refresh the list, or turn Bluetooth off and on Make sure your Beats Studio 3 Headphones are not just on and pairing, but are sufficiently charged Remember that your headphones and device have to be in range of each other effective Bluetooth range can be several hundred feet, but when pairing I always have them right next to each other to make sure Make sure your Beats are not actively paired with another device, and your phone of PC is also not actively paired with other Bluetooth headphones, speakers or other devices Power down your Studio 3 Headphones and restart your PC or phone, and try the process again If all else fails, you can always contact the Beats Online Support Page And finally, if youve arrived at this article, but you actually have a different pair of Beats headphones that is, not Beats Studio3, but a different model you can go to our more general article: How To Pair Beats Headphones: A Simple Guide. On your iPhone go to Settings, and then to Bluetooth Turn Bluetooth on Make sure your Beats Studio 3 Headphones are in Pairing Mode (see sections above) Tap on the name of your Beats Studio 3 Headphones Enter any required passwords or pin codes Click Yes or Confirm for any ensuing pop-upsGo to Apple menu, then System Preferences, and then Bluetooth Make sure your Beats Studio 3 Headphones are in Pairing Mode (see sections above) Select your Beats Studio 3 Headphones and click on Connect Enter any required passwords or pin codes Click Yes or Confirm for any ensuing pop-upsSwipe down from the top of your screen Find the Bluetooth icon and press and hold it until the Bluetooth page opens Make sure Bluetooth is turned on Make sure your Beats Studio 3 Headphones are in Pairing Mode (see sections above) Tap on the name of your Beats Studio 3 Headphones If you do not see your Beats Studio 3 Headphones listed, you may have to press one of the following (depending on your device):Connect New Device RefreshEnter any required passwords or pin codes Click Yes or Confirm for any ensuing pop-upsGo to Settings, and then to Devices Turn Bluetooth on Make sure your Beats Studio 3 Headphones are in Pairing Mode (see sections above) Click on Add Bluetooth or other device Select your Beats Studio 3 Headphones from the pop-up list and click on Connect Enter any required passwords or pin codes Click Yes or Confirm for any ensuing pop-ups Learn how to customize your Beats, pair your device, update firmware, and more. Learn how to customize your Beats, pair your device, update firmware, and more. Browse the user guide Learn where to look for the serial number on your Beats. Learn where to look for the serial number on your Beats. Learn where to look for the serial number on your Beats. Find serial number Learn about whats covered under your warranty, service options, and repair pricing. Learn more about whats covered under your warranty, service options, and repair pricing. View Service and warranty In this article I will offer very simple but complete step-by-step instructions for how to pair Beats Studio 3 wireless headphones to any device an Apple PC or iPhone, a Windows PC or Android phone. First well cover the most basic steps, which should help you get your Studio 3 headphones connected quickly and easily, and then well go over some basic troubleshooting steps if it doesnt work. Then at the end of the article I will offer more detailed instructions for finding and using the Bluetooth page on any phone or computer Apple, Android or Windows. Make sure that Bluetooth is turned on on your phone or PC. For specific instructions on how to do this with an Apple phone or PC, an Android phone or a Windows PC, see below Make sure your Beats Studio3 Headphones are close enough to the device. Effective Bluetooth range can be several hundred feet, but for pairing I like to have the headphones and the device right next to earth other Power on your Beats Studio3 Headphones and put them in pairing mode If this is the first time youve used them, your Studio 3 Headphones should enter pairing mode automatically when turned onlf theyve been used before, and you are trying to pair to a new device, you will have to place them in pairing mode manually by pressing the power button located on the bottom of the right earcup for five seconds until the fuel gauge lights flash Go back to your devices Bluetooth page and select your Studio3 Headphones, and you should be up and running. If your Beats Studio 3 Headphones are powered on and in pairing mode, they should appear here. If not, go back to the previous step and make certain the Beats Studio 3 Headphones are close enough to your device.Also, If you dont see your Beats Studio 3 Headphones listed, you can refresh the list, or turn Bluetooth off and on Make sure your Beats Studio 3 Headphones are not just on and pairing, but are sufficiently charged Remember that your headphones and device have to be in range of each other effective Bluetooth range can be several hundred feet, but when pairing I always have them right next to each other to make sure Make sure your Beats are not actively paired with another device, and your phone of PC is also not actively paired with other Bluetooth headphones, speakers or other devices Power down your Studio 3 Headphones and restart your PC or phone, and try the process again If all else fails, you can always contact the Beats Online Support Page And finally, if youve arrived at this article, but you actually have a different pair of Beats headphones that is, not Beats Studio3, but a different model you can go to our more general article: How To Pair Beats Headphones: A Simple Guide. On your iPhone go to Settings, and then to Bluetooth Turn Bluetooth on Make sure your Beats Studio 3 Headphones are in Pairing Mode (see sections above) Tap on the name of your Beats Studio 3 Headphones Enter any required passwords or pin codes Click Yes or Confirm for any ensuing pop-upsGo to Apple menu, then System Preferences, and then Bluetooth Make sure your Beats Studio 3 Headphones are in Pairing Mode (see sections above) Select your Beats Studio 3 Headphones and click on Connect Enter any required passwords or pin codes Click Yes or Confirm for any ensuing pop-upsSwipe down from the top of your screen Find the Bluetooth icon and press and hold it until the Bluetooth page opens Make sure Bluetooth is turned on Make sure your Beats Studio 3 Headphones are in Pairing Mode (see sections above) Tap on the name of your Beats Studio 3 Headphones If you do not see your Beats Studio 3 Headphones listed, you may have to press one of the following (depending on your device):Connect New Device RefreshEnter any required passwords or pin codes Click Yes or Confirm for any ensuing pop-upsGo to Settings, and then to Devices Turn Bluetooth on Make sure your Beats Studio 3 Headphones are in Pairing Mode (see sections above) Click on Add Bluetooth or other device Select your Beats Studio 3 Headphones from the pop-up list and click on Connect Enter any required passwords or pin codes Click Yes or Confirm for any ensuing pop-ups Learn how to customize your Beats, pair your device, update firmware, and more. Learn how to customize your Beats, pair your device, update firmware, and more. Browse the user guide Learn where to look for the serial number on your Beats. Learn where to look for the serial number on your Beats. Learn where to look for the serial number on your Beats. Find serial number Learn about whats covered under your warranty, service options, and repair pricing. Learn more about whats covered under your warranty, service options, and repair pricing. View Service and warranty In this article I will offer very simple but complete step-by-step instructions for how to pair Beats Studio 3 wireless headphones to any device an Apple PC or iPhone, a Windows PC or Android phone. First well cover the most basic steps, which should help you get your Studio 3 headphones connected quickly and easily, and then well go over some basic troubleshooting steps if it doesnt work. Then at the end of the article I will offer more detailed instructions for finding and using the Bluetooth page on any phone or computer Apple, Android or Windows. Make sure that Bluetooth is turned on on your phone or PC. For specific instructions on how to do this with an Apple phone or PC, an Android phone or a Windows PC, see below Make sure your Beats Studio3 Headphones are close enough to the device. Effective Bluetooth range can be several hundred feet, but for pairing I like to have the headphones and the device right next to earth other Power on your Beats Studio3 Headphones and put them in pairing mode If this is the first time youve used them, your Studio 3 Headphones should enter pairing mode automatically when turned onlf theyve been used before, and you are trying to pair to a new device, you will have to place them in pairing mode manually by pressing the power button located on the bottom of the right earcup for five seconds until the fuel gauge lights flash Go back to your devices Bluetooth page and select your Studio3 Headphones, and you should be up and running. If your Beats Studio 3 Headphones are powered on and in pairing mode, they should appear here. If not, go back to the previous step and make certain the Beats Studio 3 Headphones are close enough to your device.Also, If you dont see your Beats Studio 3 Headphones listed, you can refresh the list, or turn Bluetooth off and on Make sure your Beats Studio 3 Headphones are not just on and pairing, but are sufficiently charged Remember that your headphones and device have to be in range of each other effective Bluetooth range can be several hundred feet, but when pairing I always have them right next to each other to make sure Make sure your Beats are not actively paired with another device, and your phone of PC is also not actively paired with other Bluetooth headphones, speakers or other devices Power down your Studio 3 Headphones and restart your PC or phone, and try the process again If all else fails, you can always contact the Beats Online Support Page And finally, if youve arrived at this article, but you actually have a different pair of Beats headphones that is, not Beats Studio3, but a different model you can go to our more general article: How To Pair Beats Headphones: A Simple Guide. On your iPhone go to Settings, and then to Bluetooth Turn Bluetooth on Make sure your Beats Studio 3 Headphones are in Pairing Mode (see sections above) Tap on the name of your Beats Studio 3 Headphones Enter any required passwords or pin codes Click Yes or Confirm for any ensuing pop-upsGo to Apple menu, then System Preferences, and then Bluetooth Make sure your Beats Studio 3 Headphones are in Pairing Mode (see sections above) Select your Beats Studio 3 Headphones and click on Connect Enter any required passwords or pin codes Click Yes or Confirm for any ensuing pop-upsSwipe down from the top of your screen Find the Bluetooth icon and press and hold it until the Bluetooth page opens Make sure Bluetooth is turned on Make sure your Beats Studio 3 Headphones are in Pairing Mode (see sections above) Tap on the name of your Beats Studio 3 Headphones If you do not see your Beats Studio 3 Headphones listed, you may have to press one of the following (depending on your device):Connect New Device RefreshEnter any required passwords or pin codes Click Yes or Confirm for any ensuing pop-upsGo to Settings, and then to Devices Turn Bluetooth on Make sure your Beats Studio 3 Headphones are in Pairing Mode (see sections above) Click on Add Bluetooth or other device Select your Beats Studio 3 Headphones from the pop-up list and click on Connect Enter any required passwords or pin codes Click Yes or Confirm for any ensuing pop-ups Learn how to customize your Beats, pair your device, update firmware, and more. Learn how to customize your Beats, pair your device, update firmware, and more. Browse the user guide Learn where to look for the serial number on your Beats. Learn where to look for the serial number on your Beats. Learn where to look for the serial number on your Beats. Find serial number Learn about whats covered under your warranty, service options, and repair pricing. Learn more about whats covered under your warranty, service options, and repair pricing. View Service and warranty

How to pair dre beats bluetooth. How to pair beats studio 3. How to pair beats studio 2. How to pair beats by dre earbuds. How to put beats studio 3 in pairing mode. How to pair dre beats wireless.