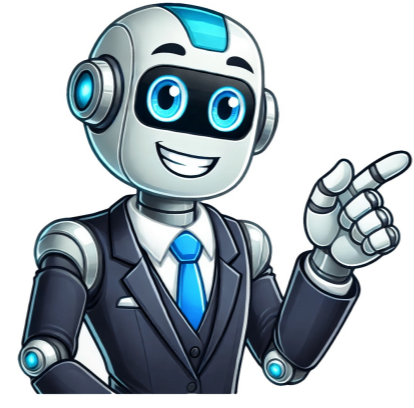


[Click Here](#)

























Hey there, fellow sewing enthusiasts! Have you ever found yourself staring at a pile of denim fabric, itching to create something fabulous, but unsure about which needle size to use? Well, fret no more because I've got you covered! In this article, we'll dive into the wonderful world of sewing machine needles and discover exactly what size you need for your denim projects. We'll explore the different types of needles, how to choose the right one, and why it's so important to get it right. So, grab your denim, your sewing machine, and let's get started on creating something beautiful together!

Denim sewing adventures. Now, grab yourself a cup of coffee for tea. If that's your jam and get ready to embark on this needle size journey with me. By the end of this article, you'll be armed with all the knowledge you need to confidently conquer your denim projects with precision and finesse. So, let's dive in and unravel the mystery of the perfect sewing machine needle size for denim! What Size Sewing Machine Needle Do I Need for Denim? Denim is a popular and durable fabric that can be challenging to sew with if you don't have the right tools. One important tool to consider is the sewing machine needle. The size of the needle you use can greatly impact the quality of your stitches and the overall success of your denim sewing projects. In this article, we will explore the different needle sizes available for sewing denim and provide guidance on choosing the right size for your needs. Understanding Sewing Machine Needle Sizes Sewing machine needles come in a variety of sizes, which are indicated by numbers. The size of the needle refers to the diameter of the shaft or the space between the needle's point and the shaft's bottom. The higher the number, the larger the needle size. For example, a size 70 needle is smaller than a size 90 needle. When it comes to sewing denim, you'll want to use a needle that is strong enough to penetrate the thick fabric without breaking or causing skipped stitches. Denim is a heavyweight fabric, so using a needle with a larger size is typically recommended. However, the specific needle size you choose will depend on various factors, such as the weight of the denim, the thread you're using, and your sewing machine's capabilities. Read Also: Insert The Bobbin In A Sewing Machine Choosing the Right Needle Size for Denim When selecting the needle size for sewing denim, there are a few key factors to consider: 1. Weight of the Denim: Denim fabric comes in different weights, ranging from lightweight to heavyweight. The weight of the denim will determine the needle size you should use. For lightweight denim, a needle size between 70 and 80 is usually sufficient. Medium-weight denim may require a needle size between 80 and 90. For heavyweight denim, a needle size between 90 and 100 is recommended. 2. Thread Thickness: The thickness of the thread you're using also plays a role in needle selection. If you're using a thicker thread, you may need to increase the needle size to accommodate it. Keep in mind that using a needle that is too small for your thread can lead to tension issues and breakage. 3. Sewing Machine Capability: Check your sewing machine's user manual to determine the maximum needle size it can accommodate. Some machines may not be able to handle larger needle sizes, so it's essential to ensure compatibility. 4. Personal Preference: Ultimately, personal preference and experience with different needle sizes will also come into play. Some sewers may find that they prefer a slightly larger or smaller needle size based on their sewing style and the results they achieve. The Benefits of Using the Correct Needle Size for Denim Using the correct needle size for sewing denim offers several benefits: 1. Improved Stitch Quality: The right needle size ensures that your stitches penetrate the fabric properly, resulting in even and secure stitches. 2. Reduced Breakage: Using a needle that is strong enough for denim reduces the risk of needle breakage, allowing you to sew with confidence and avoid interruptions. 3. Avoidance of Skipped Stitches: Skipped stitches can be a common issue when sewing denim. Using the appropriate needle size minimizes the occurrence of skipped stitches, resulting in a more professional-looking finished product. Tips for Sewing Denim Successfully Sewing denim requires some additional considerations to ensure success. Here are a few tips to keep in mind: 1. Use a Heavy-Duty Needle: Opt for a needle specifically designed for heavy fabrics or denim. These needles have a stronger shaft and are better equipped to handle the demands of sewing through thick layers of denim. 2. Use a Longer Stitch Length: Adjust your sewing machine's stitch length to a longer setting when sewing denim. This helps prevent the fabric from puckering and allows the needle to penetrate the fabric more easily. 3. Consider Using a Denim Needle: Denim needles have a modified tip that allows for easier penetration of denim fabric. If you frequently sew denim, investing in denim needles can be beneficial. Read Also: How To Clean Solder Off Copper Pipe 4. Test on Scrap Fabric: Before sewing your project, test different needle sizes and stitch settings on a scrap piece of denim to determine the optimal combination for your specific fabric and machine. In conclusion, choosing the right size sewing machine needle for denim is crucial for achieving successful and professional-looking results. Consider the weight of your denim, the thickness of your thread, your sewing machine's capabilities, and personal preference when selecting the needle size. By using the correct needle size and following the tips for sewing denim, you'll be well-equipped to take on your next denim project with confidence. Using the right size needle is crucial when sewing denim. For lightweight denim, a size 10 or 12 needle is suitable. For medium-weight denim, a size 14 needle is recommended. For heavyweight denim or multiple layers, a size 16 or 18 needle is ideal. Always test the needle on a scrap piece of denim before starting your project. Frequently Asked Questions What is the recommended size sewing machine needle for denim? When working with denim fabric, it is important to use the correct size needle to ensure smooth and even stitching. The recommended size sewing machine needle for denim is a size 16 or 18 needle. These needle sizes are specifically designed to handle the thickness and density of denim fabric. Using a larger needle size helps to prevent the needle from breaking or getting stuck in the fabric. It also allows the needle to easily penetrate through multiple layers of denim, ensuring clean and precise stitches. So, when sewing denim, make sure to use a size 16 or 18 needle for optimal results. Can I use a regular needle for sewing denim? While it is possible to use a regular needle for sewing denim, it is not recommended. Regular needles are typically designed for lighter weight fabrics and may not be strong enough to handle the thickness and density of denim. Using a regular needle on denim can result in broken needles, skipped stitches, or uneven stitches. To avoid these issues, it is best to use a needle specifically designed for denim, such as a size 16 or 18 needle. These needles have a stronger shaft and sharper point, making them more suitable for sewing through denim fabric. What are the advantages of using a larger needle for sewing denim? Using a larger needle size, such as a size 16 or 18, for sewing denim has several advantages. Firstly, a larger needle is stronger and less likely to break when sewing through thick layers of denim fabric. This helps to ensure a smooth and uninterrupted sewing process. Read Also: Do Luxe Vintage Japanese Sewing Machine Brands Secondly, a larger needle allows for better stitch formation on denim. The sharp point of a larger needle easily penetrates through the fabric, resulting in clean and precise stitches. This is especially important when working with heavyweight denim, as it can be more challenging to achieve even stitches without the proper needle size. What happens if I use a smaller needle for sewing denim? Using a smaller needle for sewing denim can lead to various issues and challenges. Firstly, a smaller needle may struggle to penetrate through the fabric, resulting in skipped stitches or uneven stitches. This can make your sewing project look messy and unprofessional. Additionally, using a smaller needle on denim increases the risk of needle breakage. Denim is a thick and dense fabric, and a smaller needle may not have the strength to handle the pressure and resistance. This can be frustrating and time-consuming, as you may constantly have to replace broken needles. Are there any other factors to consider when sewing denim? Aside from using the correct size needle, there are a few other factors to consider when sewing denim. Firstly, it is important to use a strong and durable thread that can withstand the weight and tension of denim fabric. Additionally, adjusting your sewing machine's tension settings can help ensure smooth stitching on denim. Experiment with different tension settings to find the one that works best for your specific denim fabric. Denim Sewing Machine Needle - Quick Information Final Thoughts When it comes to sewing denim, choosing the right needle size is crucial for achieving professional-looking results. The size of the sewing machine needle you need for denim will depend on the weight and thickness of the fabric. After considering various sources and expert advice, we can conclude that a size 16 or 18 needle is generally recommended for sewing denim. These needle sizes have a larger eye and a stronger shaft, making them suitable for piercing through multiple layers of thick fabric. However, it's important to note that the needle size may vary depending on the specific denim fabric you're working with. If you're sewing lightweight denim, a size 16 needle should be sufficient. On the other hand, if you're working with heavyweight or thick denim, a size 18 needle might be more appropriate. It's always a good idea to test different needle sizes on a scrap piece of fabric before starting your project to ensure the best results. Remember, when sewing denim, it's not just about the needle size. Other factors like thread quality, stitch length, and machine tension also play a role in achieving professional-looking stitches. By taking the time to choose the right needle size and adjusting the necessary settings on your sewing machine, you can confidently tackle any denim project and create beautiful garments that will stand the test of time. Happy sewing! For different weight denim, use a size 9 or 10 needle for lightweight denim (6-8 oz), a size 12 or 14 needle for medium weight denim (8-12 oz), and a size 16 or 18 needle for heavyweight denim (12 oz and above). When working with stretch denim, use a needle specifically designed for stretch fabrics. A universal 100/16 or 110/18 sewing machine needle is suitable for most denim types, but the best needle size for denim is a jeans/denim needle-sized 90/14. A heavy-duty needle is essential for sewing denim or other thick fabrics, and a size 16 or 18 needle is recommended. These needles have a sharp point and a stronger shaft to penetrate the thick layers of denim without breaking. If you don't want to buy specialty needles, you can use a size 90/14 universal needle (100/16 for thicker denim). Some lightweight and medium-weight needles can be cut on the fold using sharp shears or a new rotary cutter, while heavier fabrics require a larger needle size. A 14/90 Microtex needle often sews better than any of the others, but ballpoint needles are too convex for most closely woven denims. A new denim needle, either size 90 or size 100, is vital for sewing thicker denim material. Jeans needles penetrate thick woven fabrics, denims, and quilts with minimal deflection, reduced risk of needle breakage, and fewer skipped stitches. To achieve professional results, use a size 16 or 18 needle for heavy-weight denim. It is recommended that heavy-duty closures, such as back buttons or snaps, be installed in order to achieve a professional finish. It is recommended that bulky seams and hems be hammered with a mallet prior to stitching. Do I need a special thread to sew denim? To sew denim, use all-purpose thread in your bobbin and use a 90/14 needle for lightweight and medium-weight denim and 100/16 for heavyweight denim. If a denim tail to prevent skipped stitches. Denim is a staple fabric in most closets, and fabric finishes available in various weights, washes, and colors. Sewing with denim is just as fun as wearing it, and it comes in a wide variety of colors and weights.(Image Source: Pixabay.com)What stitch is best for denim?Chain Link Stitch is a strong stitch used for creating a roping effect on denim jeans and is commonly found on jeans. It is also used for decoration and embroidery, as it is easy to create curved lines and customize designs. Chain Link Stitch has been used for thousands of years to add embroidered designs to fabric.Bar Tack Stitch is used for areas with high stress zones, such as pockets, belt loops, and buttonholes, and fabric bags. It is strong and can be applied by hand or machine, and can be doubled up with a back stitch for extra support. Both chain link and bar tack stitches have their uses and applications in various industries.Read also: What Justifies Sparing Children From Weekend Homework?(Image Source: Pixabay.com)Can a home sewing machine sew denim?When sewing with denim, it is crucial to understand your sewing machine and the different materials it is made of. It may be slow, but the right needle and accessories can make the process smoother. For DIYers who want to sew multiple layers of denim at once, a commercial and industrial grade sewing machine is recommended. These machines are designed for sewing heavy threads used for top-stitching layers of denim. However, you can use a regular home sewing machine with a heavy thread by sewing the heavy thread in the bobbin and using a regular size thread in the top needle.Hyde Park Denim, a denim supplier with years of experience, offers affordable and durable denim material at wholesale prices. They also offer pocketing fabric, perfect for small and large jean manufacturers. These tips aim to help DIYers improve their home sewing experience with denim. Shop their denim fabrics today for durable material for the pockets of your jeans.What does a denim sewing machine needle look like?The SCHMETZ Jeans needle, also referred to as a denim needle, is distinguished by a modified medium ballpoint and a reinforced blade, which together exemplify an exclusive SCHMETZ point design.Is denim difficult to sew? Jeans are made with a flat fell seam, which is strong and hardwearing. However, it is difficult to achieve with denim and a domestic sewing machine. To create a regular seam, press it to one side and finish with a double row of top stitching. To start, fold a small piece of denim into a rectangle and wedge it under the presser foot at the beginning and end of seams. Gently walk the needle over thick seams by hand.(Image Source: Pixabay.com)What tension should I use for denim?The author shares tips for sewing denim, specifically using a straight-stitch length between 3.0 mm and 4.0 mm and increasing machine tension to 4.6. They have recently started sewing a pair of Cashmerette Ames jeans using Repreve Stretch Denim in White, and are excited to share more tips for sewing with beefy fabrics like denim. The author will be sharing these tips on Facebook Live every Wednesday at 3:00 pm Mountain Time.Most sewing machines are strong enough to sew through denim with the correct needle, stitch-length, and tension. However, small, entry-level machines may not be able to power through denim, but the tips provided in this blog post will help prepare for the journey.(Image Source: Pixabay.com)What is a 90/14 needle used for?These needles are designed for the purpose of stitching smooth, finely woven fabrics such as silk, chintz, lightweight faux suede, and microfiber. They feature a narrow shaft and a sharp point, which allows for optimal thread piercing. What size sewing machine needle do you use for what fabric??? Learn how to figure it out!So confused about what sewing machine needle to use?? Let me talk you through the 4 main types of sewing machine needles... (Image Source: Pixabay.com) Are you someone who loves to sew and create your own unique garments? If so, you know that choosing the right needle for your fabric is crucial for achieving professional-looking results. And when it comes to sewing with denim, picking the correct needle is especially important. In this article, we will dive into the world of sewing machine needles and discuss what size is best for working with denim. Whether you are a beginner or an experienced sewer, understanding the role and impact of needle size on your denim projects is essential. So, let's start exploring and take your sewing skills to a whole new level! Understanding the Importance of Choosing the Right Sewing Machine Needle for Denim Sewing the needle is unable to penetrate through multiple layers of fabric and ends up bending or breaking under the pressure. Broken needles can cause damage to your sewing machine and may even injure you as you work. On the other hand, using a too-large needle size for denim can result in very visible holes in your fabric. This is because a large needle punches bigger holes into the fabric than necessary, making it challenging to hide them with thread. Other Factors to Consider When Choosing a Sewing Machine Needle for Denim Apart from the size of your needle, there are other factors you should consider when selecting one for sewing denim. These include: Needle Type: Needle types differ based on their point shape - sharp and ballpoint needles. Sharp needles with an acute point are suitable for woven fabrics like denim as they pierce through easily without damaging or shifting the fibers. Needle Coating: Some needles come with specialized coatings like titanium that make them stronger and more durable when sewing tough fabrics like denim. Fabric Tension: When sewing denim, it's essential to adjust your machine's tension according to your fabric's thickness to achieve balanced stitches and prevent puckering. Needle Quality: The quality of needles varies across brands, with some being more durable than others. Investing in high-quality needles can go a long way in preventing stitching issues and ensuring your project's success. Selecting the correct needle size for sewing denim is critical in achieving professional-looking and long-lasting stitches. When working with this thick and durable fabric, it's crucial to choose a needle that can withstand the pressure and doesn't cause any issues like skipped stitches or broken threads. By understanding denim as a fabric and considering factors like needle type, coating, tension, and quality, you can ensure a successful and stress-free sewing experience with this versatile material. Choosing the Right Needle Size for Sewing Denim When it comes to sewing denim, finding the perfect needle size is crucial. Denim is a tough and durable fabric, often used to make jeans, jackets, and bags. To sew through multiple layers of thick denim, you need a sturdy and sharp needle that can withstand the pressure without breaking or bending. In this article, we will discuss the various needle sizes available for sewing denim and help you choose the right one for your project. Understanding Needle Sizes Before we dive into the specific needle sizes for denim, it's essential to understand how needle sizes work. The needle size is measured in a numbering system called "American Wire Gauge" (AWG). The AWG system ranges from 8 (thickest) to 18 (finest). Generally, thicker needles are used for heavy-duty fabrics like denim and leather, while finer needles are used for delicate fabrics like chiffon and silk. Factors to Consider When Choosing a Needle Size for Sewing Denim When selecting a needle size for sewing denim, consider the following factors: 1. Weight of Denim Fabric First and foremost, consider the weight of your denim fabric. Most machines can handle medium-weight to heavyweight denims (8 - 16 oz). If you are working with lightweight or very heavy denim fabric, you may need to adjust your machine's tension or use a different thread thickness. 2. Type of Stitching The type of stitching also plays a vital role in determining the right needle size. For simple straight stitches and basic sewing projects, you can use a standard-sized needle (size 9 - 14). However, if your stitching involves intricate designs or topstitching on denim, consider using a bigger-sized needle (size 16 - 22) to ensure smooth and even stitching. 3. Thread Type Another factor to consider is the type of thread you will be using. Nylon and polyester threads are thinner than cotton threads, meaning you may need a smaller needle size when using them. However, if you are working with a thick and coarse thread like topstitching thread, you will need a bigger needle size to accommodate its thickness. Recommended Needle Sizes for Sewing Denim Now that you know what factors to consider let's look at the recommended needle sizes for sewing denim. 1. Size 14/90 Needle The size 14/90 needle is the most commonly used needle size for sewing denim. It works well on medium-weight denim (around 12 oz) and creates neat and even stitches. This needle's sharp point helps it penetrate the thick fabric without causing damage or puckering. 2. Size 16/100 Needle The size 16/100 needle is slightly thicker than the size 14/90 needle, making it suitable for heavyweight denims (over 12 oz). It also has a sharp point that can easily pierce through layers of denim without breaking or bending. 3. Size 18/110 Needle If you are working with very heavy denim (18 oz or more), the size 18/110 needle is your best bet. This heavy-duty needle can handle the thickest layers of denim without any issues. Its sharp point ensures precise stitching, even on tough fabric like denim. Troubleshooting Common Needle Issues when Sewing Denim Even with the right needle size, sometimes things can go wrong when sewing denim. Here are some common issues that may arise and how to fix them: 1. Needle Breakage If your needle keeps breaking, it is a sign that it may be too thin for the denim fabric you are using. Choose a bigger needle size and try again. 2. Uneven Stitches Uneven stitches can be caused by a variety of factors, including incorrect tension settings, dull needle, or wrong needle size. Adjust the tension if needed and make sure you are using a sharp and appropriate-sized needle. 3. Skipped Stitches Skipped stitches occur when the needle misses portions of the fabric while stitching, resulting in gaps in the seam. This issue can be caused by a blunt or bent needle. Replace your needle with a new one and ensure it is the correct size for your fabric. Choosing the right needle size for sewing denim is essential for achieving professional-looking results. Consider factors like fabric weight, type of stitching, and thread type before selecting a suitable needle size. Always have various sizes on hand to accommodate different types of denim fabrics and projects. With the right needle size, sewing through layers of denim will become a breeze! 1. What size sewing machine needle is recommended for sewing denim fabric? Answer: The recommended size for sewing machine needle for denim is 90/14 or 100/16. These are considered heavy-duty needles that can easily penetrate thick and heavy denim fabric. 2. Can I use a regular sewing machine needle for sewing denim? Answer: No, you should not use a regular sewing machine needle for sewing denim. Denim is a thick and durable fabric, and a regular needle may not be strong enough to penetrate it without breaking or bending. 3. What happens if I use a smaller needle for sewing denim? Answer: Using a smaller needle for sewing denim can lead to various issues, such as skipped stitches, uneven stitches, and needle breakage. It can also cause damage to your sewing machine and affect the overall quality of your project. 4. Are there different types of needles for sewing denim? Answer: Yes, there are different types of needles designed specifically for sewing denim. Some examples include jeans needles, topstitching needles, and heavyweight needles. Each type has unique features that make them suitable for different types of denim fabrics. 5. How do I know if my needle is suitable for sewing with denim? Answer: Check the packaging or label on your needle to see if it is suitable for heavy fabrics or specifically marketed as a jeans or topstitching needle. You can also test it on a scrap piece of denim fabric before using it on your actual project. 6. Can I use a smaller sized needle when working with lightweight denim? Answer: It is generally not recommended to use smaller sized needles when working with any type of heavy fabric, including lightweight denim. The smaller size may cause the needle to break or the stitches to become too tight, resulting in puckered fabric or skipped stitches. Stick to the recommended needle size for best results. In conclusion, choosing the right sewing machine needle size for denim is crucial in achieving professional and high-quality results in all your denim projects. It is essential to consider factors such as the weight and thickness of the denim fabric, the type of needle, and the machine's compatibility when selecting a needle size. Using a larger needle size, preferably 90/14 or 100/16, is recommended for sewing through thicker and heavier denim fabrics. This size can handle multiple layers of denim without breaking or damaging the fabric. On the other hand, smaller needle sizes are suitable for lightweight and stretchy denim. Apart from the needle size, it is also important to use sharp and high-quality needles specifically designed for sewing on denim fabrics. This helps prevent skipped stitches and fraying of the fabric. Additionally, understanding the sewing machine's features and capabilities, such as tension settings and stitch length, is crucial for achieving the best results. Remember, using the right needle size for sewing denim is not just about the needle itself, but also about the overall quality of your project. So, take the time to choose the right needle size for your denim projects, and you'll be well-equipped to tackle any denim project with confidence. Understanding Needle Sizes Before we dive into the specific needle sizes for denim, it's essential to understand how needle sizes work. The needle size is measured in a numbering system called "American Wire Gauge" (AWG). The AWG system ranges from 8 (thickest) to 18 (finest). Generally, thicker needles are used for heavy-duty fabrics like denim and leather, while finer needles are used for delicate fabrics like chiffon and silk. Factors to Consider When Choosing a Needle Size for Sewing Denim When selecting a needle size for sewing denim, consider the following factors: 1. Weight of Denim Fabric First and foremost, consider the weight of your denim fabric. Most machines can handle medium-weight to heavyweight denims (8 - 16 oz). If you are working with lightweight or very heavy denim fabric, you may need to adjust your machine's tension or use a different thread thickness. 2. Type of Stitching The type of stitching also plays a vital role in determining the right needle size. For simple straight stitches and basic sewing projects, you can use a standard-sized needle (size 9 - 14). However, if your stitching involves intricate designs or topstitching on denim, consider using a bigger-sized needle (size 16 - 22) to ensure smooth and even stitching. 3. Thread Type Another factor to consider is the type of thread you will be using. Nylon and polyester threads are thinner than cotton threads, meaning you may need a smaller needle size when using them. However, if you are working with a thick and coarse thread like topstitching thread, you will need a bigger needle size to accommodate its thickness. Recommended Needle Sizes for Sewing Denim Now that you know what factors to consider let's look at the recommended needle sizes for sewing denim. 1. Size 14/90 Needle The size 14/90 needle is the most commonly used needle size for sewing denim. It works well on medium-weight denim (around 12 oz) and creates neat and even stitches. This needle's sharp point helps it penetrate the thick fabric without causing damage or puckering. 2. Size 16/100 Needle The size 16/100 needle is slightly thicker than the size 14/90 needle, making it suitable for heavyweight denims (over 12 oz). It also has a sharp point that can easily pierce through layers of denim without breaking or bending. 3. Size 18/110 Needle If you are working with very heavy denim (18 oz or more), the size 18/110 needle is your best bet. This heavy-duty needle can handle the thickest layers of denim without any issues. Its sharp point ensures precise stitching, even on tough fabric like denim. Troubleshooting Common Needle Issues when Sewing Denim Even with the right needle size, sometimes things can go wrong when sewing denim. Here are some common issues that may arise and how to fix them: 1. Needle Breakage If your needle keeps breaking, it is a sign that it may be too thin for the denim fabric you are using. Choose a bigger needle size and try again. 2. Uneven Stitches Uneven stitches can be caused by a variety of factors, including incorrect tension settings, dull needle, or wrong needle size. Adjust the tension if needed and make sure you are using a sharp and appropriate-sized needle. 3. Skipped Stitches Skipped stitches occur when the needle misses portions of the fabric while stitching, resulting in gaps in the seam. This issue can be caused by a blunt or bent needle. Replace your needle with a new one and ensure it is the correct size for your fabric. Choosing the right needle size for sewing denim is essential for achieving professional-looking results. Consider factors like fabric weight, type of stitching, and thread type before selecting a suitable needle size. Always have various sizes on hand to accommodate different types of denim fabrics and projects. With the right needle size, sewing through layers of denim will become a breeze! 1. What size sewing machine needle is recommended for sewing denim fabric? Answer: The recommended size for sewing machine needle for denim is 90/14 or 100/16. These are considered heavy-duty needles that can easily penetrate thick and heavy denim fabric. 2. Can I use a regular sewing machine needle for sewing denim? Answer: No, you should not use a regular sewing machine needle for sewing denim. Denim is a thick and durable fabric, and a regular needle may not be strong enough to penetrate it without breaking or bending. 3. What happens if I use a smaller needle for sewing denim? Answer: Using a smaller needle for sewing denim can lead to various issues, such as skipped stitches, uneven stitches, and needle breakage. It can also cause damage to your sewing machine and affect the overall quality of your project. 4. Are there different types of needles for sewing denim? Answer: Yes, there are different types of needles designed specifically for sewing denim. Some examples include jeans needles, topstitching needles, and heavyweight needles. Each type has unique features that make them suitable for different types of denim fabrics. 5. How do I know if my needle is suitable for sewing with denim? Answer: Check the packaging or label on your needle to see if it is suitable for heavy fabrics or specifically marketed as a jeans or topstitching needle. You can also test it on a scrap piece of denim fabric before using it on your actual project. 6. Can I use a smaller sized needle when working with lightweight denim? Answer: It is generally not recommended to use smaller sized needles when working with any type of heavy fabric, including lightweight denim. The smaller size may cause the needle to break or the stitches to become too tight, resulting in puckered fabric or skipped stitches. Stick to the recommended needle size for best results. In conclusion, choosing the right sewing machine needle size for denim is crucial in achieving professional and high-quality results in all your denim projects. It is essential to consider factors such as the weight and thickness of the denim fabric, the type of needle, and the machine's compatibility when selecting a needle size. Using a larger needle size, preferably 90/14 or 100/16, is recommended for sewing through thicker and heavier denim fabrics. This size can handle multiple layers of denim without breaking or damaging the fabric. On the other hand, smaller needle sizes are suitable for lightweight and stretchy denim. Apart from the needle size, it is also important to use sharp and high-quality needles specifically designed for sewing on denim fabrics. This helps prevent skipped stitches and fraying of the fabric. Additionally, understanding the sewing machine's features and capabilities, such as tension settings and stitch length, is crucial for achieving the best results. Remember, using the right needle size for sewing denim is not just about the needle itself, but also about the overall quality of your project. So, take the time to choose the right needle size for your denim projects, and you'll be well-equipped to tackle any denim project with confidence. Understanding Needle Sizes Before we dive into the specific needle sizes for denim, it's essential to understand how needle sizes work. The needle size is measured in a numbering system called "American Wire Gauge" (AWG). The AWG system ranges from 8 (thickest) to 18 (finest). Generally, thicker needles are used for heavy-duty fabrics like denim and leather, while finer needles are used for delicate fabrics like chiffon and silk. Factors to Consider When Choosing a Needle Size for Sewing Denim When selecting a needle size for sewing denim, consider the following factors: 1. Weight of Denim Fabric First and foremost, consider the weight of your denim fabric. Most machines can handle medium-weight to heavyweight denims (8 - 16 oz). If you are working with lightweight or very heavy denim fabric, you may need to adjust your machine's tension or use a different thread thickness. 2. Type of Stitching The type of stitching also plays a vital role in determining the right needle size. For simple straight stitches and basic sewing projects, you can use a standard-sized needle (size 9 - 14). However, if your stitching involves intricate designs or topstitching on denim, consider using a bigger-sized needle (size 16 - 22) to ensure smooth and even stitching. 3. Thread Type Another factor to consider is the type of thread you will be using. Nylon and polyester threads are thinner than cotton threads, meaning you may need a smaller needle size when using them. However, if you are working with a thick and coarse thread like topstitching thread, you will need a bigger needle size to accommodate its thickness. Recommended Needle Sizes for Sewing Denim Now that you know what factors to consider let's look at the recommended needle sizes for sewing denim. 1. Size 14/90 Needle The size 14/90 needle is the most commonly used needle size for sewing denim. It works well on medium-weight denim (around 12 oz) and creates neat and even stitches. This needle's sharp point helps it penetrate the thick fabric without causing damage or puckering. 2. Size 16/100 Needle The size 16/100 needle is slightly thicker than the size 14/90 needle, making it suitable for heavyweight denims (over 12 oz). It also has a sharp point that can easily pierce through layers of denim without breaking or bending. 3. Size 18/110 Needle If you are working with very heavy denim (18 oz or more), the size 18/110 needle is your best bet. This heavy-duty needle can handle the thickest layers of denim without any issues. Its sharp point ensures precise stitching, even on tough fabric like denim. Troubleshooting Common Needle Issues when Sewing Denim Even with the right needle size, sometimes things can go wrong when sewing denim. Here are some common issues that may arise and how to fix them: 1. Needle Breakage If your needle keeps breaking, it is a sign that it may be too thin for the denim fabric you are using. Choose a bigger needle size and try again. 2. Uneven Stitches Uneven stitches can be caused by a variety of factors, including incorrect tension settings, dull needle, or wrong needle size. Adjust the tension if needed and make sure you are using a sharp and appropriate-sized needle. 3. Skipped Stitches Skipped stitches occur when the needle misses portions of the fabric while stitching, resulting in gaps in the seam. This issue can be caused by a blunt or bent needle. Replace your needle with a new one and ensure it is the correct size for your fabric. Choosing the right needle size for sewing denim is essential for achieving professional-looking results. Consider factors like fabric weight, type of stitching, and thread type before selecting a suitable needle size. Always have various sizes on hand to accommodate different types of denim fabrics and projects. With the right needle size, sewing through layers of denim will become a breeze! 1. What size sewing machine needle is recommended for sewing denim fabric? Answer: The recommended size for sewing machine needle for denim is 90/14 or 100/16. These are considered heavy-duty needles that can easily penetrate thick and heavy denim fabric. 2. Can I use a regular sewing machine needle for sewing denim? Answer: No, you should not use a regular sewing machine needle for sewing denim. Denim is a thick and durable fabric, and a regular needle may not be strong enough to penetrate it without breaking or bending. 3. What happens if I use a smaller needle for sewing denim? Answer: Using a smaller needle for sewing denim can lead to various issues, such as skipped stitches, uneven stitches, and needle breakage. It can also cause damage to your sewing machine and affect the overall quality of your project. 4. Are there different types of needles for sewing denim? Answer: Yes, there are different types of needles designed specifically for sewing denim. Some examples include jeans needles, topstitching needles, and heavyweight needles. Each type has unique features that make them suitable for different types of denim fabrics. 5. How do I know if my needle is suitable for sewing with denim? Answer: Check the packaging or label on your needle to see if it is suitable for heavy fabrics or specifically marketed as a jeans or topstitching needle. You can also test it on a scrap piece of denim fabric before using it on your actual project. 6. Can I use a smaller sized needle when working with lightweight denim? Answer: It is generally not recommended to use smaller sized needles when working with any type of heavy fabric, including lightweight denim. The smaller size may cause the needle to break or the stitches to become too tight, resulting in puckered fabric or skipped stitches. Stick to the recommended needle size for best results. In conclusion, choosing the right sewing machine needle size for denim is crucial in achieving professional and high-quality results in all your denim projects. It is essential to consider factors such as the weight and thickness of the denim fabric, the type of needle, and the machine's compatibility when selecting a needle size. Using a larger needle size, preferably 90/14 or 100/16, is recommended for sewing through thicker and heavier denim fabrics. This size can handle multiple layers of denim without breaking or damaging the fabric. On the other hand, smaller needle sizes are suitable for lightweight and stretchy denim. Apart from the needle size, it is also important to use sharp and high-quality needles specifically designed for sewing on denim fabrics. This helps prevent skipped stitches and fraying of the fabric. Additionally, understanding the sewing machine's features and capabilities, such as tension settings and stitch length, is crucial for achieving the best results. Remember, using the right needle size for sewing denim is not just about the needle itself, but also about the overall quality of your project. So, take the time to choose the right needle size for your denim projects, and you'll be well-equipped to tackle any denim project with confidence. Understanding Needle Sizes Before we dive into the specific needle sizes for denim, it's essential to understand how needle sizes work. The needle size is measured in a numbering system called "American Wire Gauge" (AWG). The AWG system ranges from 8 (thickest) to 18 (finest). Generally, thicker needles are used for heavy-duty fabrics like denim and leather, while finer needles are used for delicate fabrics like chiffon and silk. Factors to Consider When Choosing a Needle Size for Sewing Denim When selecting a needle size for sewing denim, consider the following factors: 1. Weight of Denim Fabric First and foremost, consider the weight of your denim fabric. Most machines can handle medium-weight to heavyweight denims (8 - 16 oz). If you are working with lightweight or very heavy denim fabric, you may need to adjust your machine's tension or use a different thread thickness. 2. Type of Stitching The type of stitching also plays a vital role in determining the right needle size. For simple straight stitches and basic sewing projects, you can use a standard-sized needle (size 9 - 14). However, if your stitching involves intricate designs or topstitching on denim, consider using a bigger-sized needle (size 16 - 22) to ensure smooth and even stitching. 3. Thread Type Another factor to consider is the type of thread you will be using. Nylon and polyester threads are thinner than cotton threads, meaning you may need a smaller needle size when using them. However, if you are working with a thick and coarse thread like topstitching thread, you will need a bigger needle size to accommodate its thickness. Recommended Needle Sizes for Sewing Denim Now that you know what factors to consider let's look at the recommended needle sizes for sewing denim. 1. Size 14/90 Needle The size 14/90 needle is the most commonly used needle size for sewing denim. It works well on medium-weight denim (around 12 oz) and creates neat and even stitches. This needle's sharp point helps it penetrate the thick fabric without causing damage or puckering. 2. Size 16/100 Needle The size 16/100 needle is slightly thicker than the size 14/90 needle, making it suitable for heavyweight denims (over 12 oz). It also has a sharp point that can easily pierce through layers of denim without breaking or bending. 3. Size 18/110 Needle If you are working with very heavy denim (18 oz or more), the size 18/110 needle is your best bet. This heavy-duty needle can handle the thickest layers of denim without any issues. Its sharp point ensures precise stitching, even on tough fabric like denim. Troubleshooting Common Needle Issues when Sewing Denim Even with the right needle size, sometimes things can go wrong when sewing denim. Here are some common issues that may arise and how to fix them: 1. Needle Breakage If your needle keeps breaking, it is a sign that it may be too thin for the denim fabric you are using. Choose a bigger needle size and try again. 2. Uneven Stitches Uneven stitches can be caused by a variety of factors, including incorrect tension settings, dull needle, or wrong needle size. Adjust the tension if needed and make sure you are using a sharp and appropriate-sized needle. 3. Skipped Stitches Skipped stitches occur when the needle misses portions of the fabric while stitching, resulting in gaps in the seam. This issue can be caused by a blunt or bent needle. Replace your needle with a new one and ensure it is the correct size for your fabric. Choosing the right needle size for sewing denim is essential for achieving professional-looking results. Consider factors like fabric weight, type of stitching, and thread type before selecting a suitable needle size. Always have various sizes on hand to accommodate different types of denim fabrics and projects. With the right needle size, sewing through layers of denim will become a breeze! 1. What size sewing machine needle is recommended for sewing denim fabric? Answer: The recommended size for sewing machine needle for denim is 90/14 or 100/16. These are considered heavy-duty needles that can easily penetrate thick and heavy denim fabric. 2. Can I use a regular sewing machine needle for sewing denim? Answer: No, you should not use a regular sewing machine needle for sewing denim. Denim is a thick and durable fabric, and a regular needle may not be strong enough to penetrate it without breaking or bending. 3. What happens if I use a smaller needle for sewing denim? Answer: Using a smaller needle for sewing denim can lead to various issues, such as skipped stitches, uneven stitches, and needle breakage. It can also cause damage to your sewing machine and affect the overall quality of your project. 4. Are there different types of needles for sewing denim? Answer: Yes, there are different types of needles designed specifically for sewing denim. Some examples include jeans needles, topstitching needles, and heavyweight needles. Each type has unique features that make them suitable for different types of denim fabrics. 5. How do I know if my needle is suitable for sewing with denim? Answer: Check the packaging or label on your needle to see if it is suitable for heavy fabrics or specifically marketed as a jeans or topstitching needle. You can also test it on a scrap piece of denim fabric before using it on your actual project. 6. Can I use a smaller sized needle when working with lightweight denim? Answer: It is generally not recommended to use smaller sized needles when working with any type of heavy fabric, including lightweight denim. The smaller size may cause the needle to break or the stitches to become too tight, resulting in puckered fabric or skipped stitches. Stick to the recommended needle size for best results. In conclusion, choosing the right sewing machine needle size for denim is crucial in achieving professional and high-quality results in all your denim projects. It is essential to consider factors such as the weight and thickness of the denim fabric, the type of needle, and the machine's compatibility when selecting a needle size. Using a larger needle size, preferably 90/14 or 100/16, is recommended for sewing through thicker and heavier denim fabrics. This size can handle multiple layers of denim without breaking or damaging the fabric. On the other hand, smaller needle sizes are suitable for lightweight and stretchy denim. Apart from the needle size, it is also important to use sharp and high-quality needles specifically designed for sewing on denim fabrics. This helps prevent skipped stitches and fraying of the fabric. Additionally, understanding the sewing machine's features and capabilities, such as tension settings and stitch length, is crucial for achieving the best results. Remember, using the right needle size for sewing denim is not just about the needle itself, but also about the overall quality of your project. So, take the time to choose the right needle size for your denim projects, and you'll be well-equipped to tackle any denim project with confidence. Understanding Needle Sizes Before we dive into the specific needle sizes for denim, it's essential to understand how needle sizes work. The needle size is measured in a numbering system called "American Wire Gauge" (AWG). The AWG system ranges from 8 (thickest) to 18 (finest). Generally, thicker needles are used for heavy-duty fabrics like denim and leather, while finer needles are used for delicate fabrics like chiffon and silk. Factors to Consider When Choosing a Needle Size for Sewing Denim When selecting a needle size for sewing denim, consider the following factors: 1. Weight of Denim Fabric First and foremost, consider the weight of your denim fabric. Most machines can handle medium-weight to heavyweight denims (8 - 16 oz). If you are working with lightweight or very heavy denim fabric, you may need to adjust your machine's tension or use a different thread thickness. 2. Type of Stitching The type of stitching also plays a vital role in determining the right needle size. For simple straight stitches and basic sewing projects, you can use a standard-sized needle (size 9 - 14). However, if your stitching involves intricate designs or topstitching on denim, consider using a bigger-sized needle (size 16 - 22) to ensure smooth and even stitching. 3. Thread Type Another factor to consider is the type of thread you will be using. Nylon and polyester threads are thinner than cotton threads, meaning you may need a smaller needle size when using them. However, if you are working with a thick and coarse thread like topstitching thread, you will need a bigger needle size to accommodate its thickness. Recommended Needle Sizes for Sewing Denim Now that you know what factors to consider let's look at the recommended needle sizes for sewing denim. 1. Size 14/90 Needle The size 14/90 needle is the most commonly used needle size for sewing denim. It works well on medium-weight denim (around 12 oz) and creates neat and even stitches. This needle's sharp point helps it penetrate the thick fabric without causing damage or puckering. 2. Size 16/100 Needle The size 16/100 needle is slightly thicker than the size 14/90 needle, making it suitable for heavyweight denims (over 12 oz). It also has a sharp point that can easily pierce through layers of denim without breaking or bending. 3. Size 18/110 Needle If you are working with very heavy denim (18 oz or more), the size 18/110 needle is your best bet. This heavy-duty needle can handle the thickest layers of denim without any issues. Its sharp point ensures precise stitching, even on tough fabric like denim. Troubleshooting Common Needle Issues when Sewing Denim Even with the right needle size, sometimes things can go wrong when sewing denim. Here are some common issues that may arise and how to fix them: 1. Needle Breakage If your needle keeps breaking, it is a sign that it may be too thin for the denim fabric you are using. Choose a bigger needle size and try again. 2. Uneven Stitches Uneven stitches can be caused by a variety of factors, including incorrect tension settings, dull needle, or wrong needle size. Adjust the tension if needed and make sure you are using a sharp and appropriate-sized needle. 3. Skipped Stitches Skipped stitches occur when the needle misses portions of the fabric while stitching, resulting in gaps in the seam. This issue can be caused by a blunt or bent needle. Replace your needle with a new one and ensure it is the correct size for your fabric. Choosing the right needle size for sewing denim is essential for achieving professional-looking results. Consider factors like fabric weight, type of stitching, and thread type before selecting a suitable needle size. Always have various sizes on hand to accommodate different types of denim fabrics and projects. With the right needle size, sewing through layers of denim will become a breeze! 1. What size sewing machine needle is recommended for sewing denim fabric? Answer: The recommended size for sewing machine needle for denim is 90/14 or 100/16. These are considered heavy-duty needles that can easily penetrate thick and heavy denim fabric. 2. Can I use a regular sewing machine needle for sewing denim? Answer: No, you should not use a regular sewing machine needle for sewing denim. Denim is a thick and durable fabric, and a regular needle may not be strong enough to penetrate it without breaking or bending. 3. What happens if I use a smaller needle for sewing denim? Answer: Using a smaller needle for sewing denim can lead to various issues, such as skipped stitches, uneven stitches, and needle breakage. It can also cause damage to your sewing machine and affect the overall quality of your project. 4. Are there different types of needles for sewing denim? Answer: Yes, there are different types of needles designed specifically for sewing denim. Some examples include jeans needles, topstitching needles, and heavyweight needles. Each type has unique features that make them suitable for different types of denim fabrics. 5. How do I know if my needle is suitable for sewing with denim? Answer: Check the packaging or label on your needle to see if it is suitable for heavy fabrics or specifically marketed as a jeans or topstitching needle. You can also test it on a scrap piece of denim fabric before using it on your actual project. 6. Can I use a smaller sized needle when working with lightweight denim? Answer: It is generally not recommended to use smaller sized needles when working with any type of heavy fabric, including lightweight denim. The smaller size may cause the needle to break or the stitches to become too tight, resulting in puckered fabric or skipped stitches. Stick to the recommended needle size for best results. In conclusion, choosing the right sewing machine needle size for denim is crucial in achieving professional and high-quality results in all your denim projects. It is essential to consider factors such as the weight and thickness of the denim fabric, the type of needle, and the machine's compatibility when selecting a needle size. Using a larger needle size, preferably 90/14 or 100/16, is recommended for sewing through thicker and heavier denim fabrics. This size can handle multiple layers of denim without breaking or damaging the fabric. On the other hand, smaller needle sizes are suitable for lightweight and stretchy denim. Apart from the needle size, it is also important to use sharp and high-quality needles specifically designed for sewing on denim fabrics. This helps prevent skipped stitches and fraying of the fabric. Additionally, understanding the sewing machine's features and capabilities, such as tension settings and stitch length, is crucial for achieving the best results. Remember, using the right needle size for sewing denim is not just about the needle itself, but also about the overall quality of your project. So, take the time to choose the right needle size for your denim projects, and you'll be well-equipped to tackle any denim project with confidence. Understanding Needle Sizes Before we dive into the specific needle sizes for denim, it's essential to understand how needle sizes work. The needle size is measured in a numbering system called "American Wire Gauge" (AWG). The AWG system ranges from 8 (thickest) to 18 (finest). Generally, thicker needles are used for heavy-duty fabrics like denim and leather, while finer needles are used for delicate fabrics like chiffon and silk. Factors to Consider When Choosing a Needle Size for Sewing Denim When selecting a needle size for sewing denim, consider the following factors: 1. Weight of Denim Fabric First and foremost, consider the weight of your denim fabric. Most machines can handle medium-weight to heavyweight denims (8 - 16 oz). If you are working with lightweight or very heavy denim fabric, you may need to adjust your machine's tension or use a different thread thickness. 2. Type of Stitching The type of stitching also plays a vital role in determining the right needle size. For simple straight stitches and basic sewing projects, you can use a standard-sized needle (size 9 - 14). However, if your stitching involves intricate designs or topstitching on denim, consider using a bigger-sized needle (size 16 - 22) to ensure smooth and even stitching. 3. Thread Type Another factor to consider is the type of thread you will be using. Nylon and polyester threads are thinner than cotton threads, meaning you may need a smaller needle size when using them. However, if you are working with a thick and coarse thread like topstitching thread, you will need a bigger needle size to accommodate its thickness. Recommended Needle Sizes for Sewing Denim Now that you know what factors to consider let's look at the recommended needle sizes for sewing denim. 1. Size 14/90 Needle The size 14/90 needle is the most commonly used needle size for sewing denim. It works well on medium-weight denim (around 12 oz) and creates neat and even stitches. This needle's sharp point helps it penetrate the thick fabric without causing damage or puckering. 2. Size 16/100 Needle The size 16/100 needle is slightly thicker than the size 14/90 needle, making it suitable for heavyweight denims (over 12 oz). It also has a sharp point that can easily pierce through layers of denim without breaking or bending. 3. Size 18/110 Needle If you are working with very heavy denim (18 oz or more), the size 18/110 needle is your best bet. This heavy-duty needle can handle the thickest layers of denim without any issues. Its sharp point ensures precise stitching, even on tough fabric like denim. Troubleshooting Common Needle Issues when Sewing Denim Even with the right needle size, sometimes things can go wrong when sewing denim. Here are some common issues that may arise and how to fix them: 1. Needle Breakage If your needle keeps breaking, it is a sign that it may be too thin for the denim fabric you are using. Choose a bigger needle size and try again. 2. Uneven Stitches Uneven stitches can be caused by a variety of factors, including incorrect tension settings, dull needle, or wrong needle size. Adjust the tension if needed and make sure you are using a sharp and appropriate-sized needle. 3. Skipped Stitches Skipped stitches occur when the needle misses portions of the fabric while stitching, resulting in gaps in the seam. This issue can be caused by a blunt or bent needle. Replace your needle with a new one and ensure it is the correct size for your fabric. Choosing the right needle size for sewing denim is essential for achieving professional-looking results. Consider factors like fabric weight, type of stitching, and thread type before selecting a suitable needle size. Always have various sizes on hand to accommodate different types of denim fabrics and projects. With the right needle size, sewing through layers of denim will become a breeze! 1. What size sewing machine needle is recommended for sewing denim fabric? Answer: The recommended size for sewing machine needle for denim is 90/14 or 100/16. These are considered heavy-duty needles that can easily penetrate thick and heavy denim fabric. 2. Can I use a regular sewing machine needle for sewing denim? Answer: No, you should not use a regular sewing machine needle for sewing denim. Denim is a thick and durable fabric, and a regular needle may not be strong enough to penetrate it without breaking or bending. 3. What happens if I use a smaller needle for sewing denim? Answer: Using a smaller needle for sewing denim can lead to